



July 26, 2019

We are writing on behalf of the Energy and Environment Research Initiative at the University of British Columbia. We want to keep you updated about our research on the environmental impacts from fugitive natural gas associated with oil and gas development in the Peace Region, and to answer questions and receive input about the project.

We are investigating fugitive natural gas from several angles, one of which is focused on understanding the distribution of natural gas in groundwater in the Peace Region. To do this, we plan to install 25 to 30 groundwater monitoring wells in the Peace Region. This will help us determine where and how much natural gas is in the groundwater, where it comes from, and if it is related to oil and gas activities.

We have installed 14 wells so far, shown in the map on the following page (Figure 1). Seven of these wells are so-called baseline wells, which we use to monitor baseline levels of natural gas in groundwater. These are located away from oil and gas well sites. Seven wells are ‘proximal’ wells, located in areas of high well-pad density and generally within 400 m of a well pad. We use a variety of factors to select well locations, including geology, hydrogeology, distance from oil and gas sites, distribution, access, population centers, and others. We plan to drill more ‘proximal’ wells in upcoming drilling campaigns.

The next map (Figure 2) shows potential well locations that we are considering for our upcoming campaign in August. These locations are not yet confirmed, and we gratefully welcome your input.

Please tell us if you have any questions or concerns. We would be happy to discuss this in person or on the phone. Thank you for your time and we very much look forward to engaging with you in the near future.

Yours sincerely,

Dr. Roger Beckie, P. Eng.
Professor
University of British Columbia,
Vancouver
Tel: (604) 822-6462
rbeckie@eoas.ubc.ca

Dr. Aaron Cahill
Research Fellow
Heriot Watt University
Edinburgh, United Kingdom
Tel: +44 (0) 131 451 3832
a.cahill@hw.ac.uk

Bethany Ladd, M.Sc.
Project Manager
University of British Columbia,
Vancouver
Tel: (604) 827-1428
bladd@eoas.ubc.ca



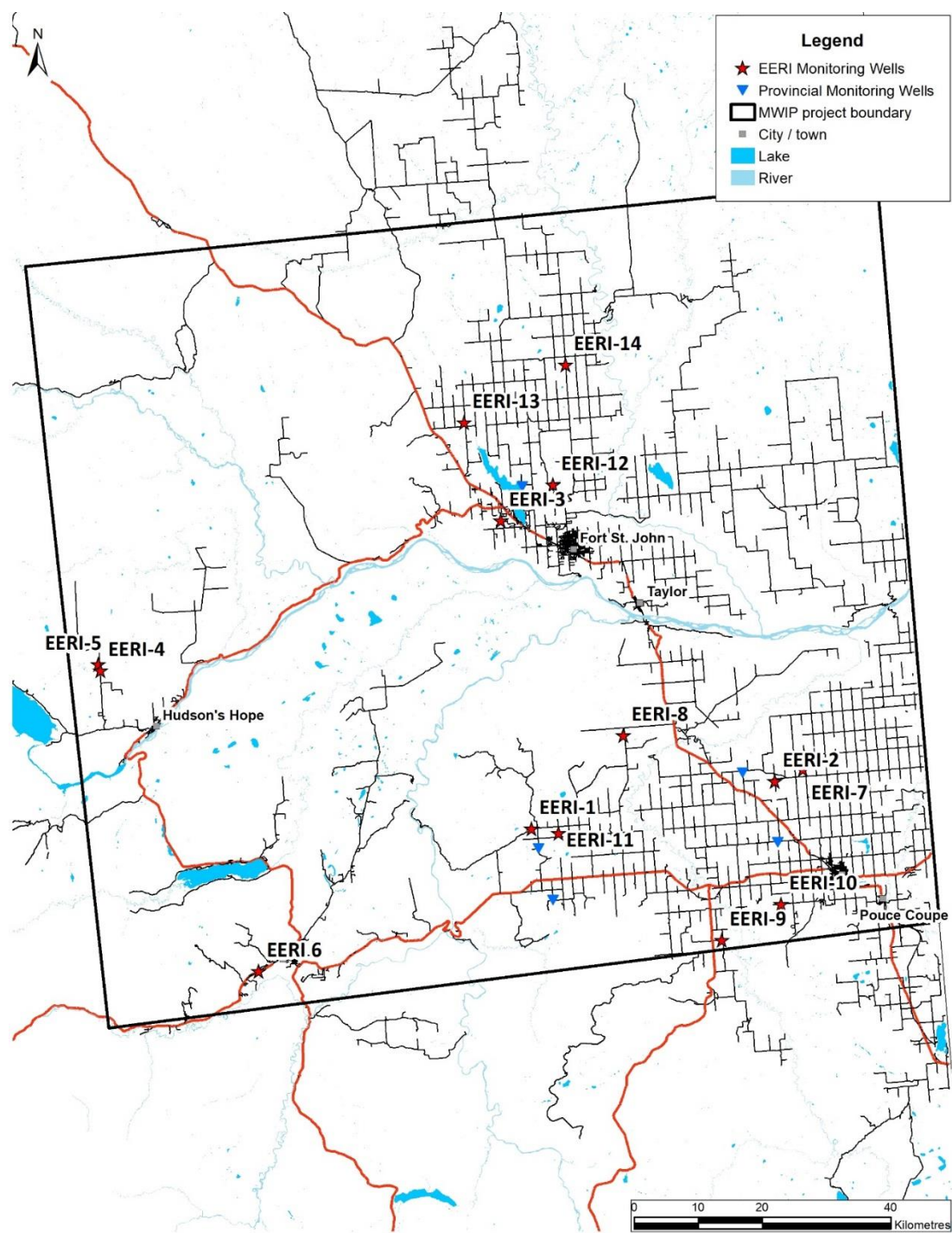


Figure 1: Map of current EERI monitoring well network (wells labeled “EERI”).

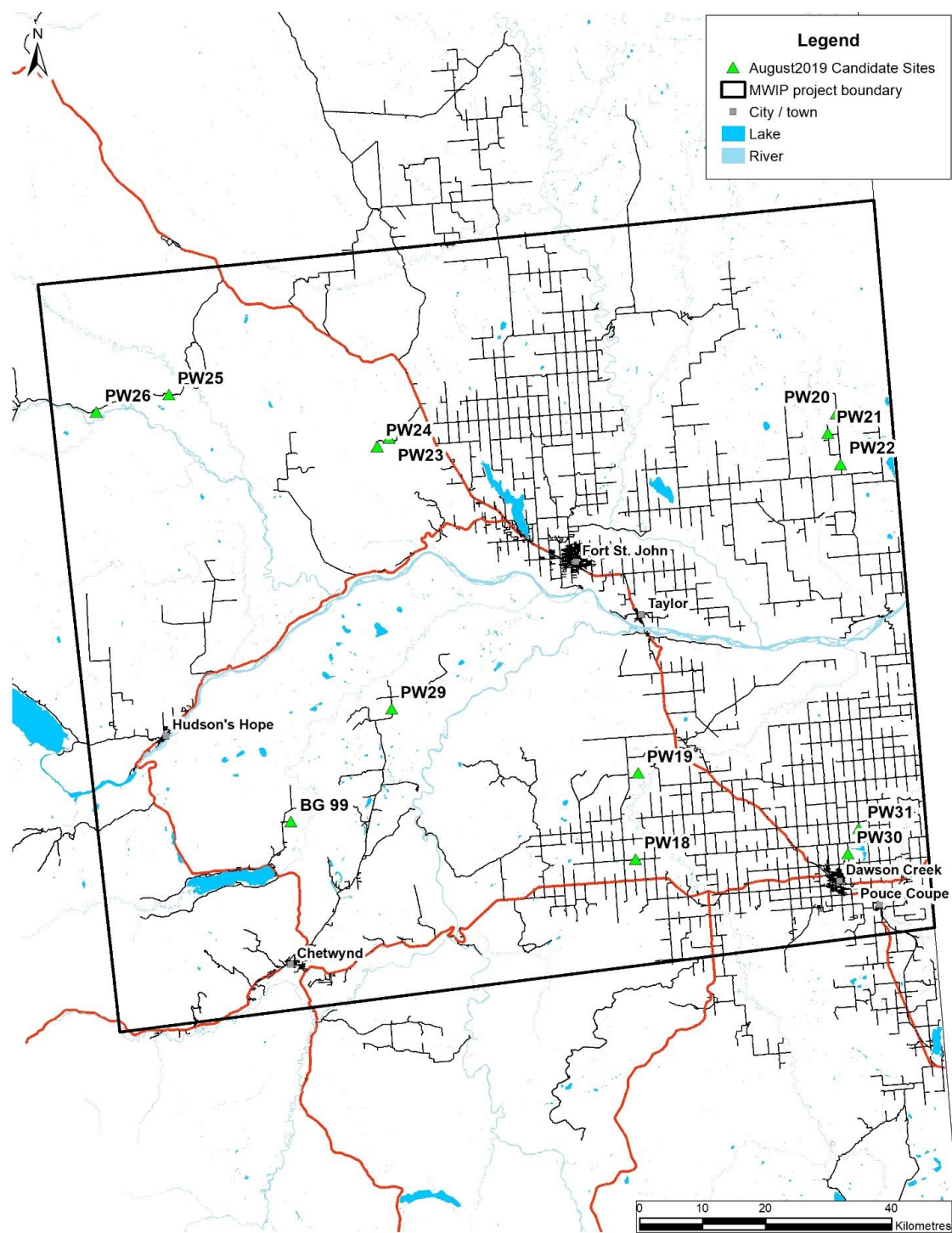


Figure 2. Map of candidate sites for the August 2019 drilling campaign.