



# PEACE RIVER REGIONAL DISTRICT

# EVACUATION ORDER

## EVACUATION ORDER

Red Creek

Electoral Area B

May 6, 2023 @ 10:30hrs

Pursuant to Section 12 (1) of the BC Emergency Program Act an **Evacuation Order** has been issued by the Peace River Regional District due to immediate danger to life safety caused by a wildfire. A map of the area can be found on the following page.

Members of the RCMP and other applicable agencies will be expediting this action.

The Evacuation Order is in effect for the following areas:

- From a point 0.75km south of the intersection of the Red Creek Road and Highway 97N
- Headed south west to a point of intersection of the Red Creek
- Following the Red Creek south to Cache Creek
- Following the Cache Creek west to the North Cache Creek
- Following the North Cache Creek north to a point due east of the 258 road
- Due east to Highway 97N
- And includes the following addresses:

13279 – North Cache Creek	14424 – Red Creek Road	14595 – Red Creek Road	14747 – Red Creek Road
13374 – North Cache Creek	14438 – Red Creek Road	14598 – Red Creek Road	14770 – Lower Cache Road
13706 – North Cache Creek	14441 – Red Creek Road	14603 – Red Creek Road	14774 – Lower Cache Road
13721 – North Cache Creek	14454 – Red Creek Road	14614 – Red Creek Road	14780 – Lower Cache Road
13914 – North Cache Creek	14455 – Red Creek Road	14630 – Red Creek Road	14792 – Lower Cache Road
14004 – North Cache Creek	14464 – Red Creek Road	14637 – Red Creek Road	14892 – Lower Cache Road
14010 – North Cache Creek	14473 – Red Creek Road	14647 – Red Creek Road	14964 – Lower Cache Road
14064 – North Cache Creek	14488 – Red Creek Road	14652 – Red Creek Road	14968 – Lower Cache Road
14080 – North Cache Creek	14541 – Red Creek Road	14655 – Red Creek Road	16113 – Lower Cache Road
14356 – Red Creek Road	14557 – Red Creek Road	14664 – Red Creek Road	16113A – Lower Cache Road
14362 – Red Creek Road	14564 – Red Creek Road	14672 – Red Creek Road	16113B – Lower Cache Road
14374 – Red Creek Road	14573 – Red Creek Road	14673 – Red Creek Road	16113C – Lower Cache Road
14389 – Red Creek Road	14581 – Red Creek Road	14689 – Red Creek Road	16113D – Lower Cache Road
14390 – Red Creek Road	14584 – Red Creek Road	14694 – Red Creek Road	
14398 – Red Creek Road	14586 – Red Creek Road	14709 – Red Creek Road	
14416 – Red Creek Road	14588 – Red Creek Road	14721 – Red Creek Road	

Residents located along the North Cache Creek Road may become trapped due to fire conditions and should evacuate immediately.



Please ensure that your household is signed up to receive notifications from the PRRD.

[www.nebcalerts.com](http://www.nebcalerts.com)



# PEACE RIVER REGIONAL DISTRICT

# EVACUATION ORDER

## YOU MUST LEAVE THE AREA IMMEDIATELY

### WHAT YOU SHOULD DO:

- Follow the Red Creek Road or Lower Cache Road East to Highway 97N and continue to Fort St John.
- Proceed to the Emergency Support Services reception centre located at:
  - North Peace Arena - 9805 96 Avenue, Fort St. John, BC
    - IF the reception center is closed when you arrive please call (250) 794-3310
- Please visit [www.prrd.bc.ca](http://www.prrd.bc.ca) and [BC Wildfire Services](#) regularly for current information.
- If you need transportation assistance from the area, advise the person providing this notice or call 1-800-670-7773.
- Shut off all gas and electrical appliances, other than refrigerators and freezers.
- Close all windows and doors.
- Close gates (latch) but do not lock.
- Gather your family and, if you have room, take a neighbour or someone needing transportation. Do not use more vehicles than you have to.
- Take critical items (medicine, purse, wallet, cell & charger and keys) only if they are immediately available. Take pets in pet kennels or on leash.
- Do not use the telephone unless you need emergency service.

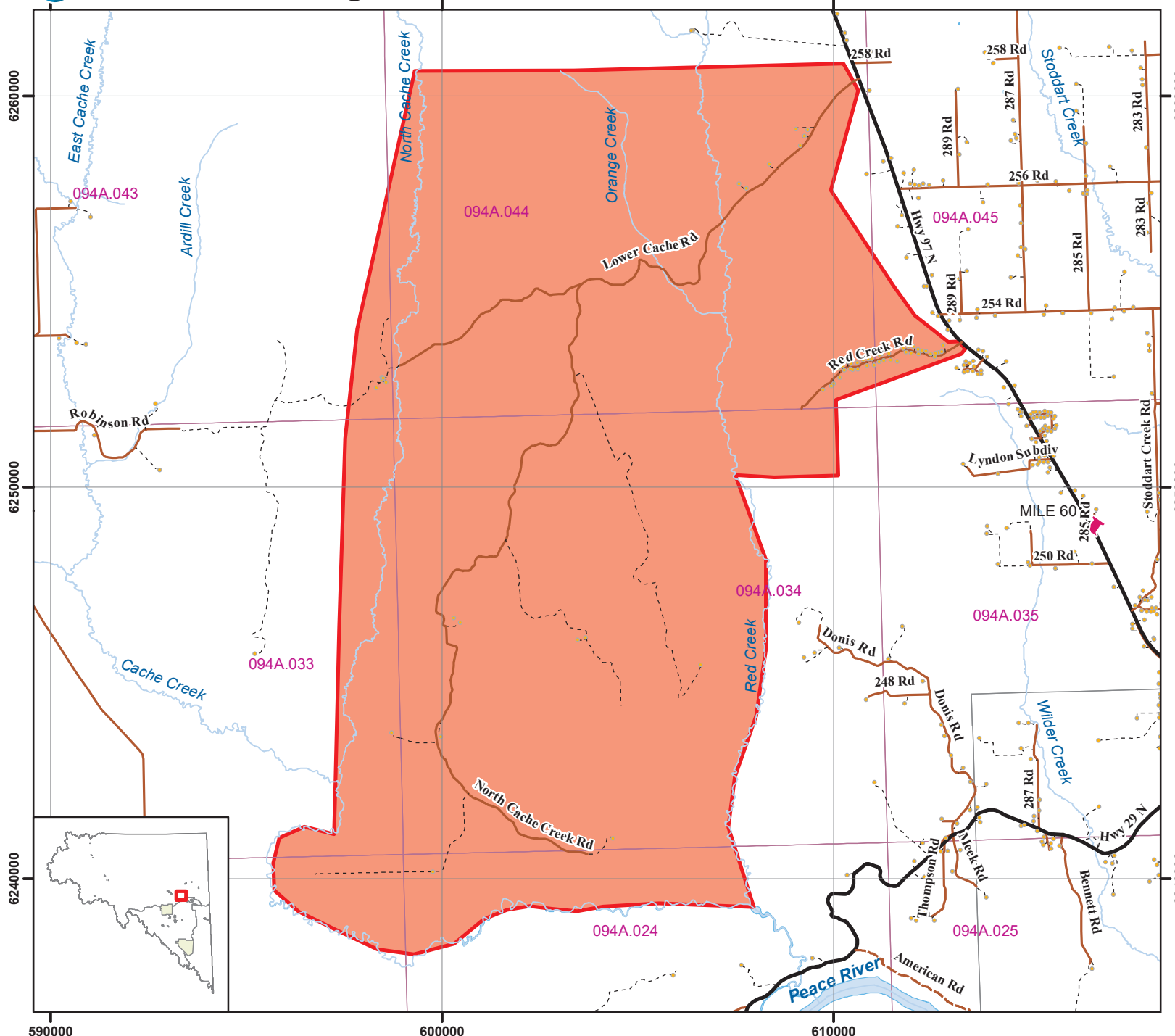
Further information will be issued at [prrd.bc.ca](http://prrd.bc.ca).

---

Leonard Hiebert  
Chair,  
Peace River Regional District

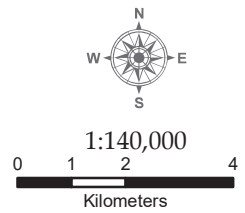


# Peace River Regional District



## Evacuation Order #1 for Red Creek Fire

Fire: G80223



Saturday, May 6, 2023

- Evacuation Order
- Building/Residence
- Mile Post
- Water Feature
- B.C.G.S Map Sheet
- Electoral
- Municipal
- First Nations
- Ecological Reserve
- Protected Area
- Provincial Park
- Lake/River

Compiled and produced by the Peace River Regional District on Saturday, May 6, 2023.