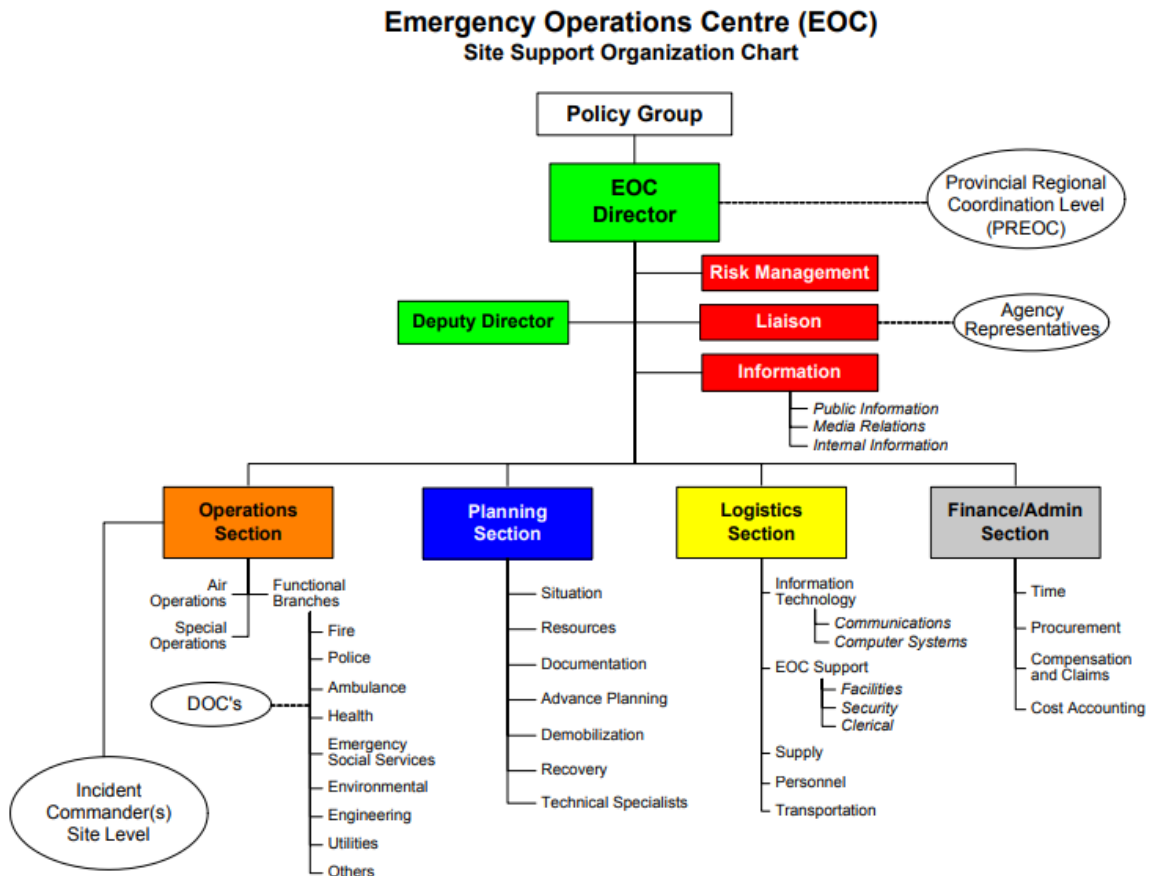




What is the structure of the EOC?

The Emergency Operations Centre structure is set out under the BC Emergency Management System (BCEMS) which uses the structure and guidelines of the Incident Command System (ICS). This flexible, standardized system is a common approach to Emergency Management that has been used internationally since the early 1970s.



EOC Activation

Initially the positions within the EOC are staffed by qualified individuals from PRRD staff. PRRD staff are required, as part of their jobs, to undertake emergency management training. As the emergency event stretches over a longer time period, trained and experienced staff from neighboring municipalities and other areas of the province are brought in to provide relief for PRRD staff.



Policy Group

When an EOC is activated, local authorities establish a policy group comprised of the head of the local authority (e.g., Chair) and other board members and senior executive officers in order to provide the EOC Director with policy direction. An example of this level of policy direction is the declaration of a “state of local emergency.”

EOC Director

The Director in the EOC has overall responsibility for the EOC. He or she provides leadership to the management team (section chiefs and executive), approves EOC objectives brought forward, and communicates with the Policy Group.

Operations – ‘the Doers’

- Communicates with site and field personnel
- Supports site operations
- Implements plans and strategies
- Coordination of multi-agency/department responses

Planning – ‘the Thinkers’

- Collects, evaluates, displays info
- Develops action plans and creates status reports
- Conduct long-term/advanced planning
- Recommends alternative actions
- Maintains overall resource and event status

Logistics – ‘the Getters’

- Orders supplies and requested resources
- Establishes transportation resources
- Arranges staffing and staffing requests

Finance – ‘the Payers’

- Tracking of expenses
- Coordinates cost reimbursement claims to the province
- Supports contracts and procurement
- Tracks personnel time

Incident Commander

The individual responsible for the management of all incident operations at the incident site.