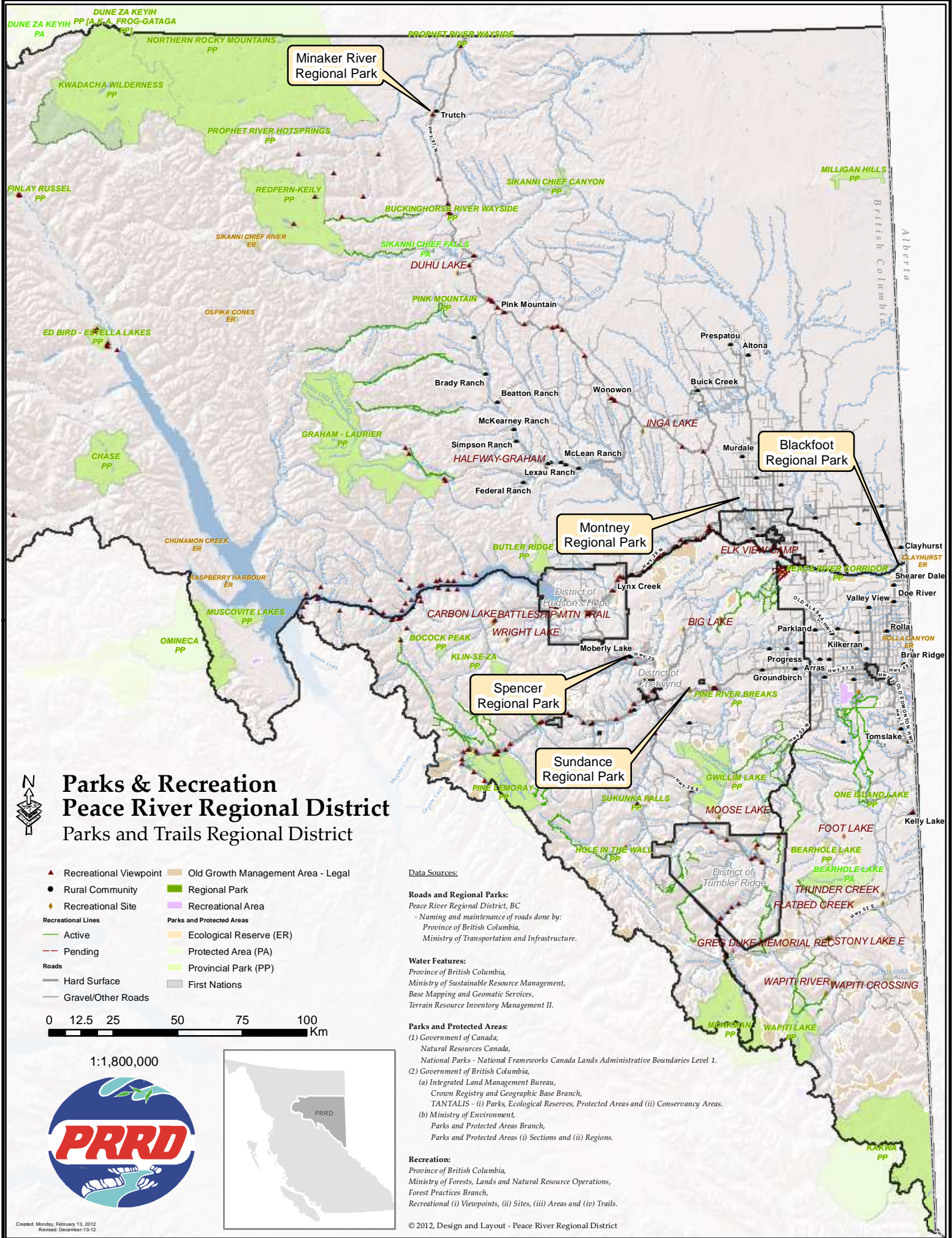
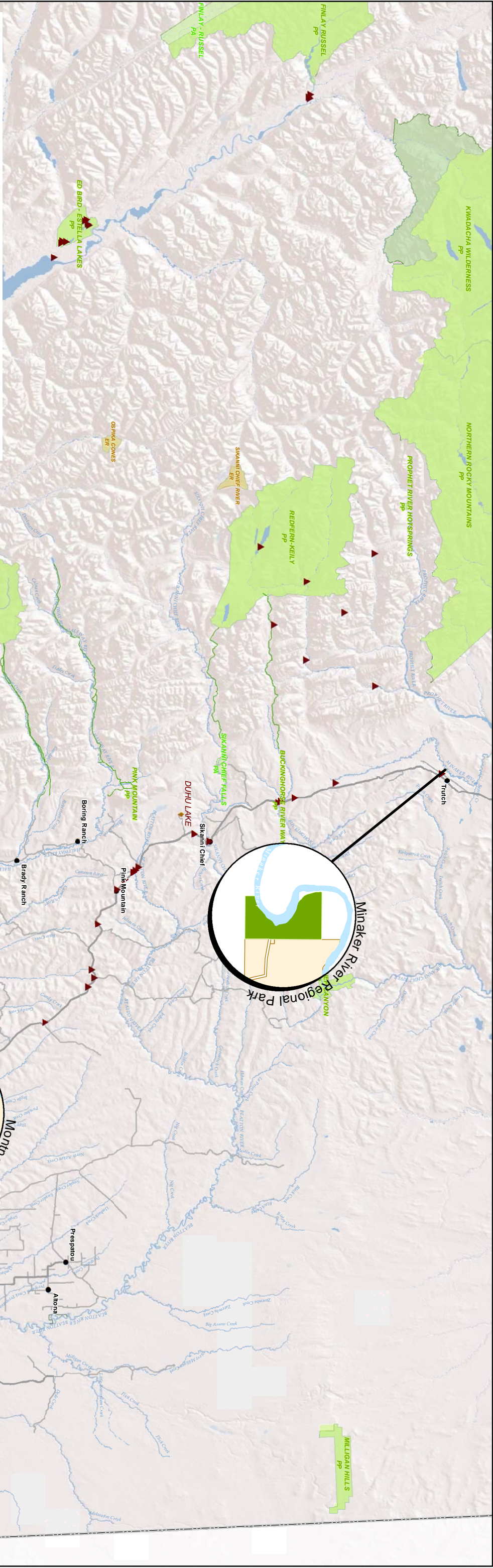


APPENDIX F
EXISTING LAND TENURES MAP & RECREATION SITES



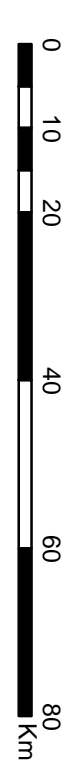


Parks & Recreation

Peace River Regional District

North Peace

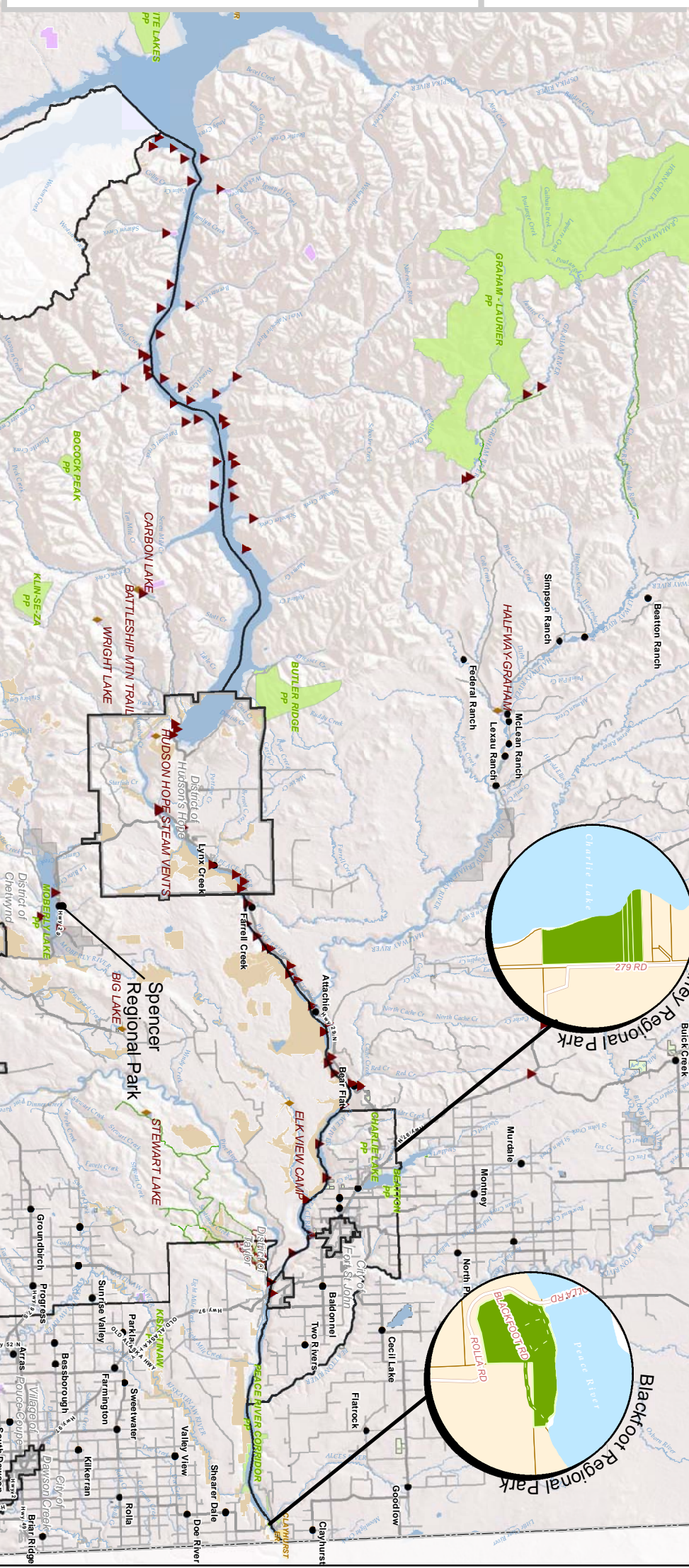
1:900,000



- Recreational Viewpoint
- Rural Community
- Recreational Site
- Recreational Lines
- Active
- Pending
- Roads
- Hard Surface
- Gravel/Other Roads
- Old Growth Management Area - Legal
- Regional Park
- Recreational Area
- Parks and Protected Areas
- Ecological Reserve (ER)
- Protected Area (PA)
- Provincial Park (PP)
- First Nations



Data Sources:
Roads and Regional Parks:
Peace River Regional District, BC
- Naming and maintenance of roads done by:
Province of British Columbia,
Ministry of Transportation and Infrastructure
Water Features:
Province of British Columbia,
Ministry of Sustainable Resource Management,
Base Mapping and Geomatic Services,
Terrestrial Resource Inventory Management II.
Recreation:
Province of British Columbia,
Ministry of Forests, Lands and Natural Resource Operations,
Forest Practices Branch,
Recreational (i) Viewpoints, (ii) Sites, (iii) Areas and (iv) Trails



Parks and Protected Areas:
(1) Government of Canada,
Natural Resources Canada,
National Parks - National Frameworks Canada Lands Administrative Boundaries Level 1,
(2) Government of British Columbia,
Ministry of Sustainable Resource Management,
Base Mapping and Geomatic Services,
Terrestrial Resource Inventory Management II,
(3) Ministry of Environment,
Parks and Protected Areas Branch,
(4) Ministry of Forests, Lands and Natural Resource Operations,
Forest Practices Branch,
Recreational (i) Viewpoints, (ii) Sites, (iii) Areas and (iv) Trails

© 2012 Design and Layout - Peace River Regional District

