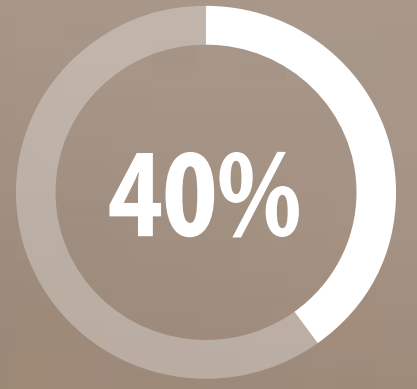


OPEN FIRE REGULATIONS

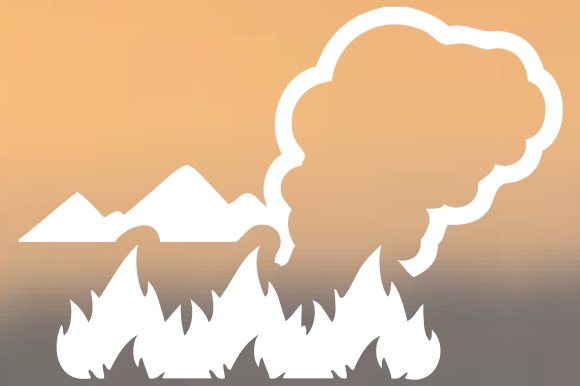
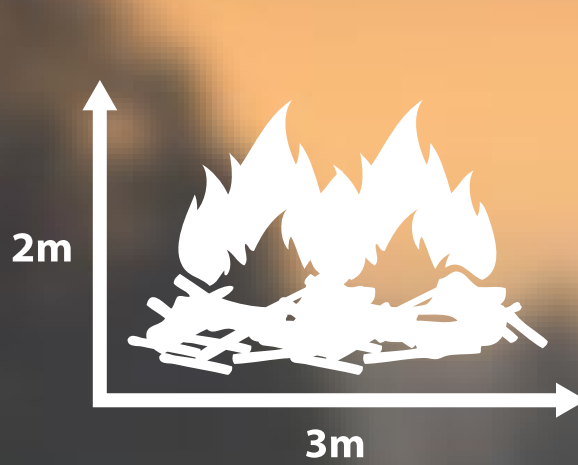
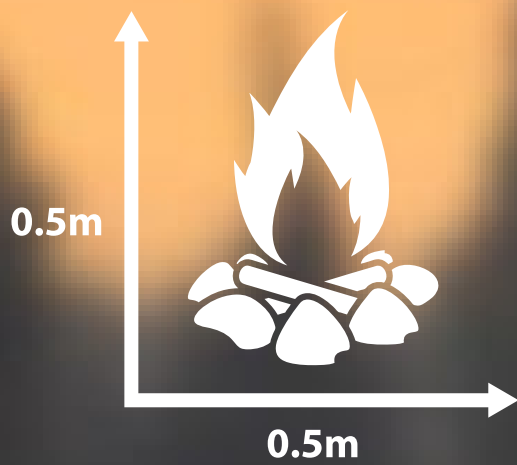


40% of B.C. wildfires are human-caused and therefore preventable

GENERAL REGULATIONS:

- Never burn in strong wind conditions.
- Your fire must be extinguished before leaving the area.
- Always keep your fire a safe distance away from nearby branches, wood and other combustible materials.
- Never leave your fire unattended.

CAMPFIRES, CATEGORY 2 FIRES AND CATEGORY 3 FIRES: WHAT'S THE DIFFERENCE?



CAMPFIRE:

- Any fire no larger than 0.5 metres high by 0.5 metres wide

REGULATIONS:

- You must build a fire guard around your campfire.
- You must have ready access to 8 litres of water or a shovel for the entire time your campfire is lit.
- Never leave your campfire unattended.** Your campfire must be completely extinguished and the ashes must be cool to the touch before leaving the area for any length of time. (Hot coals can reignite the fire.)

EQUIPMENT AND ACTIVITIES

- During campfire prohibitions, only a CSA- or ULC-approved portable campfire apparatus may be used, and the flame height must not exceed 15 centimetres.

CATEGORY 2 FIRE:

- 1 to 2 concurrently burning piles no larger than 2 metres high by 3 metres wide
- Stubble or grass burning over an area less than 0.2 hectares

REGULATIONS:

- A fuel break must be established around any Category 2 burn area.
- Your fire must be attended at all times.** At least one person equipped with a fire-fighting hand tool must be there.

EQUIPMENT AND ACTIVITIES

- Burning barrels may be restricted when a Category 2 fire prohibition is in effect.
- Fireworks may be restricted when a Category 2 fire prohibition is in effect.

CATEGORY 3 FIRE:

- Any fire larger than 2 metres high by 3 metres wide
- 3 or more concurrently burning piles no larger than 2 metres high by 3 metres wide
- 1 or more burning windrows
- Stubble or grass burning over an area greater than 0.2 hectares

REGULATIONS:

- A fuel break must be established around any Category 3 burn area.
- Monitor your open burn to ensure that the fire doesn't spread beyond its intended size.
- You must have a burn registration number to light a Category 3 open fire. Call the burn registration line **1 888 797-1717** to obtain one.

- Always check your smoke sensitivity zone for venting conditions: www.env.gov.bc.ca/epd/epdpa/venting

*Further bans and restrictions can be implemented at the BC Wildfire Service's discretion.



Anyone found in contravention of an open fire prohibition may be fined up to \$1,150. If your fire escapes and results in a wildfire, you may be fined anywhere from \$100,000 to \$1 million and be sentenced to one year in prison. Please check with local government authorities for any other restrictions before lighting any open fire.

Please report wildfires by calling ***5555** or **1 800 663-5555**.