



# NORTH PEACE FRINGE AREA OFFICIAL COMMUNITY PLAN BYLAW No. 2460, 2021

### SCHEDULE B - INDEX MAP

*Bylaw Date Approved Amendment*

No Amendments

### SCHEDULE B - MAP 4

*Bylaw Date Approved Amendment*

No Amendments

### SCHEDULE C

*Bylaw Date Approved Amendment*

No Amendments

### SCHEDULE F

*Bylaw Date Approved Amendment*

No Amendments

### SCHEDULE B - MAP 1

*Bylaw Date Approved Amendment*

No Amendments

### SCHEDULE B - MAP 5

*Bylaw Date Approved Amendment*

No Amendments

### SCHEDULE D

*Bylaw Date Approved Amendment*

No Amendments

### SCHEDULE G

*Bylaw Date Approved Amendment*

No Amendments

### SCHEDULE B - MAP 2

*Bylaw Date Approved Amendment*

No Amendments

### SCHEDULE B - MAP 6

*Bylaw Date Approved Amendment*

No Amendments

### SCHEDULE E

*Bylaw Date Approved Amendment*

No Amendments

### SCHEDULE H

*Bylaw Date Approved Amendment*

No Amendments

### SCHEDULE B - MAP 3

*Bylaw Date Approved Amendment*

2512	2023/06/29	From AG to RR
2527	2023/10/04	From ISA to RR

### SCHEDULE I

*Bylaw Date Approved Amendment*

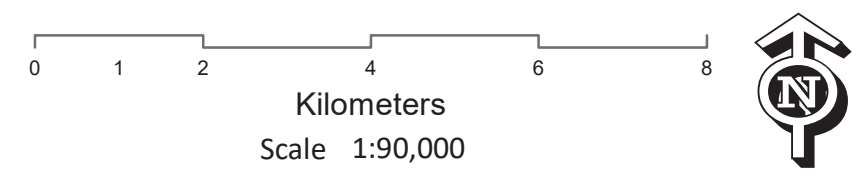
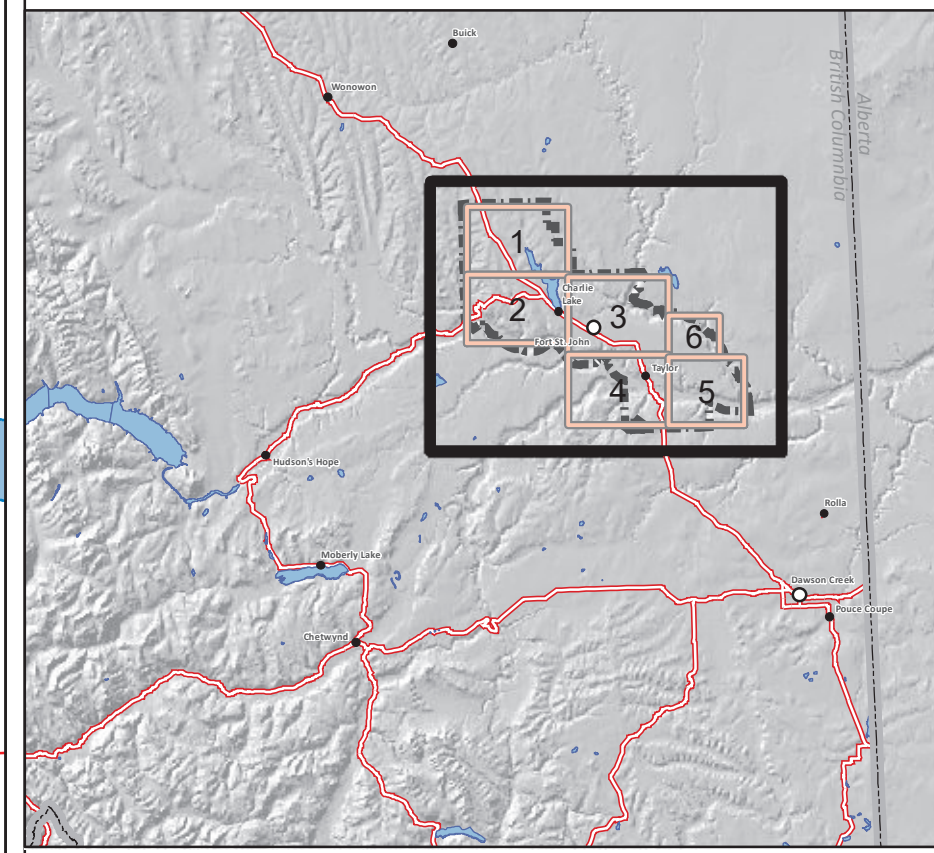
No Amendments

# North Peace Fringe Area Official Community Plan Bylaw No. 2460, 2021 Schedule B Index



- Legend**
- OCP Boundary
  - Municipal Boundary
  - Parcels
  - Rail Line
  - Highway
  - Roads
  - Water Feature
  - River
  - Swamp / Marsh
  - Rural Community
- Land Use Designation**
- Agriculture (Ag)
  - Park, open space, natural environment (OS)
  - Civic, Assembly, Institution (Civic)
  - General Commercial (GC)
  - Settlement Centre (SC)
  - Light Service Industrial (LSI)
  - Heavy Industrial (HI)
  - Rural Residential (RR)
  - Community Residential (CR)
  - Industrial Study Area (ISA)
  - Geotechnical Hazard Study Area (GHSA)

For the most up to date information please visit the Peace River Regional Districts web map at: <https://prrd.bc.ca/services/mapping-gis/web-map/>



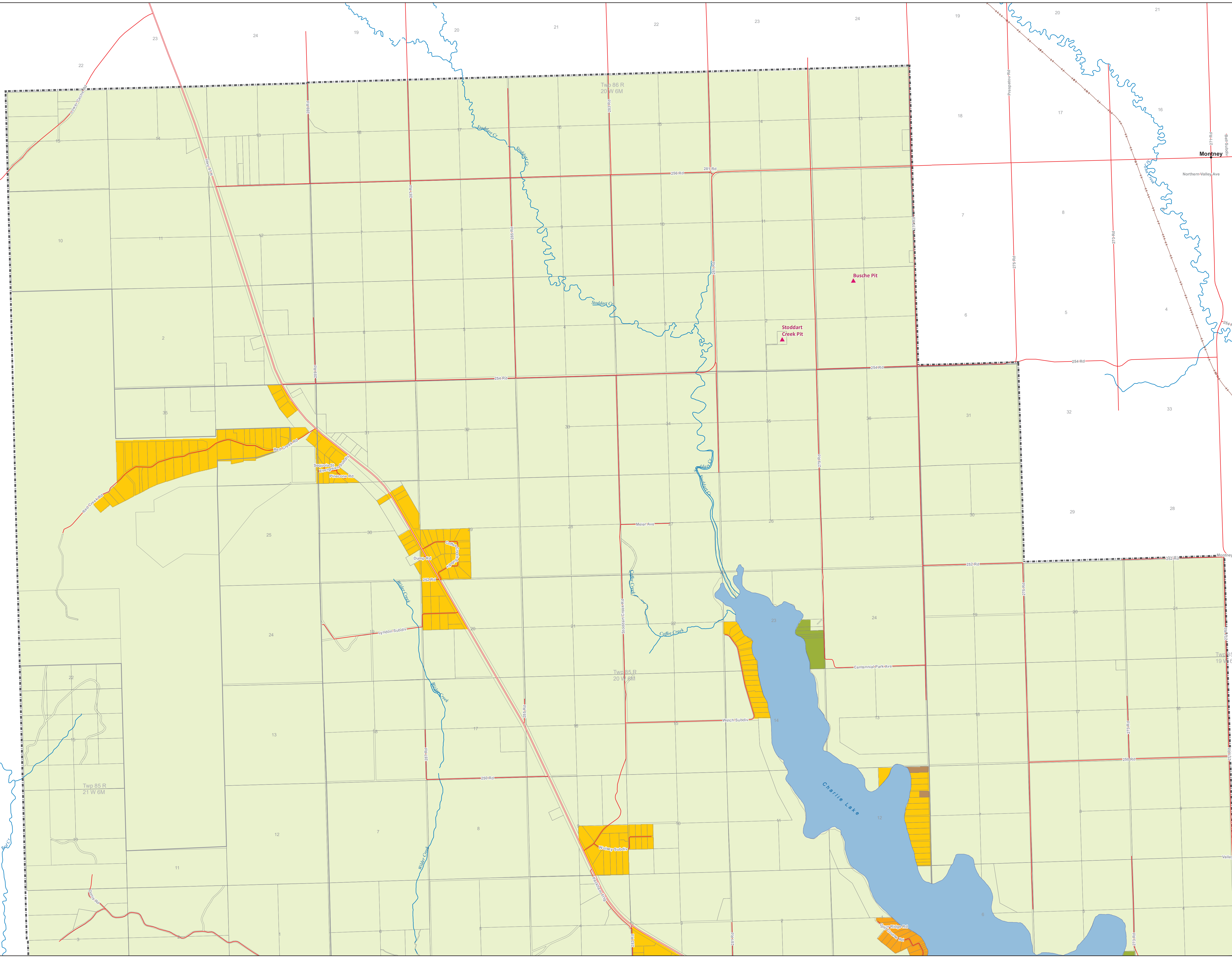
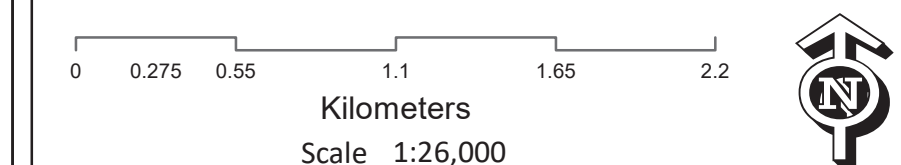
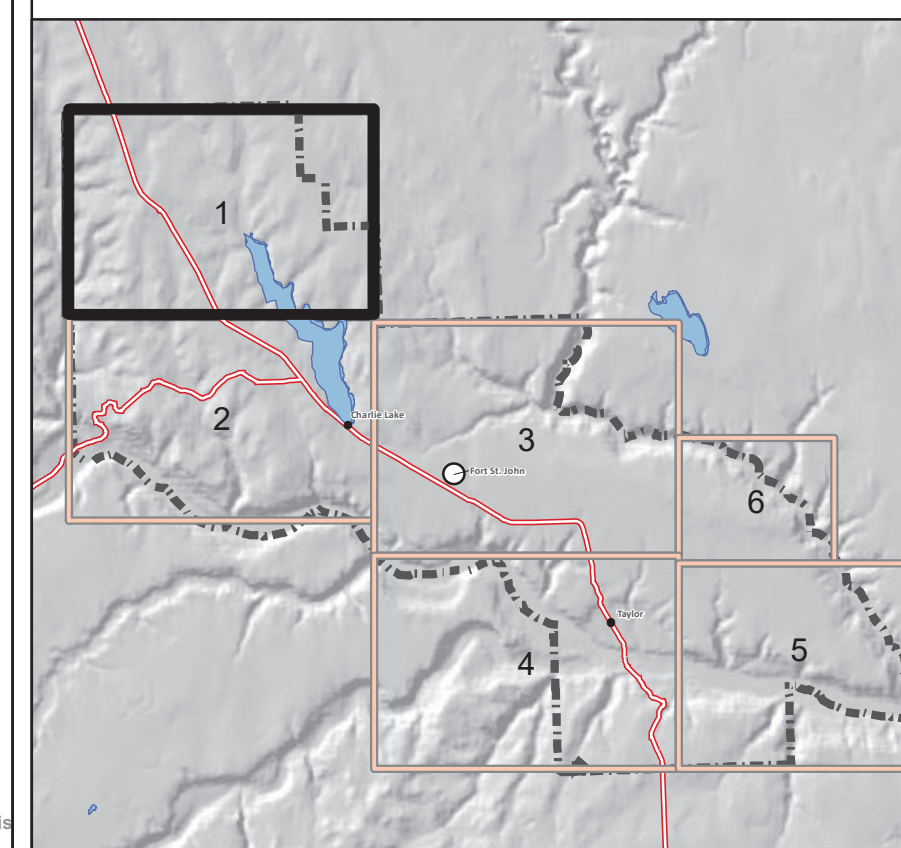
# North Peace Fringe Area Official Community Plan Bylaw No. 2460, 2021 Schedule B Map 1 Land Use Designations



## Legend

- OCP Boundary
- Municipal Boundary
- Parcels
- Rail Line
- Highway
- Roads
- Water Feature
- River
- Swamp / Marsh
- Rural Community
- Gravel Deposit
- Land Use Designation**
- Agriculture (Ag)
- Park, open space, natural environment (OS)
- Civic, Assembly, Institution (Civic)
- General Commercial (GC)
- Settlement Centre (SC)
- Light Service Industrial (LSI)
- Heavy Industrial (HI)
- Rural Residential (RR)
- Community Residential (CR)
- Industrial Study Area (ISA)
- Geotechnical Hazard Study Area (GHSA)

For the most up to date information please visit the Peace River Regional Districts web map at: <https://prrd.bc.ca/services/mapping-gis/web-map/>



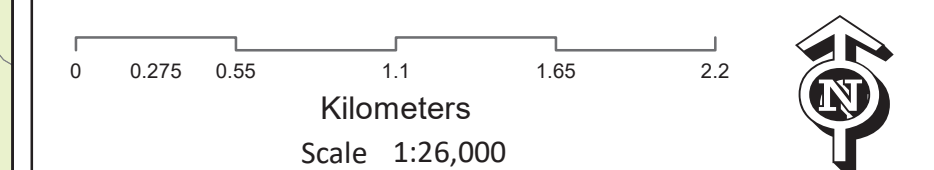
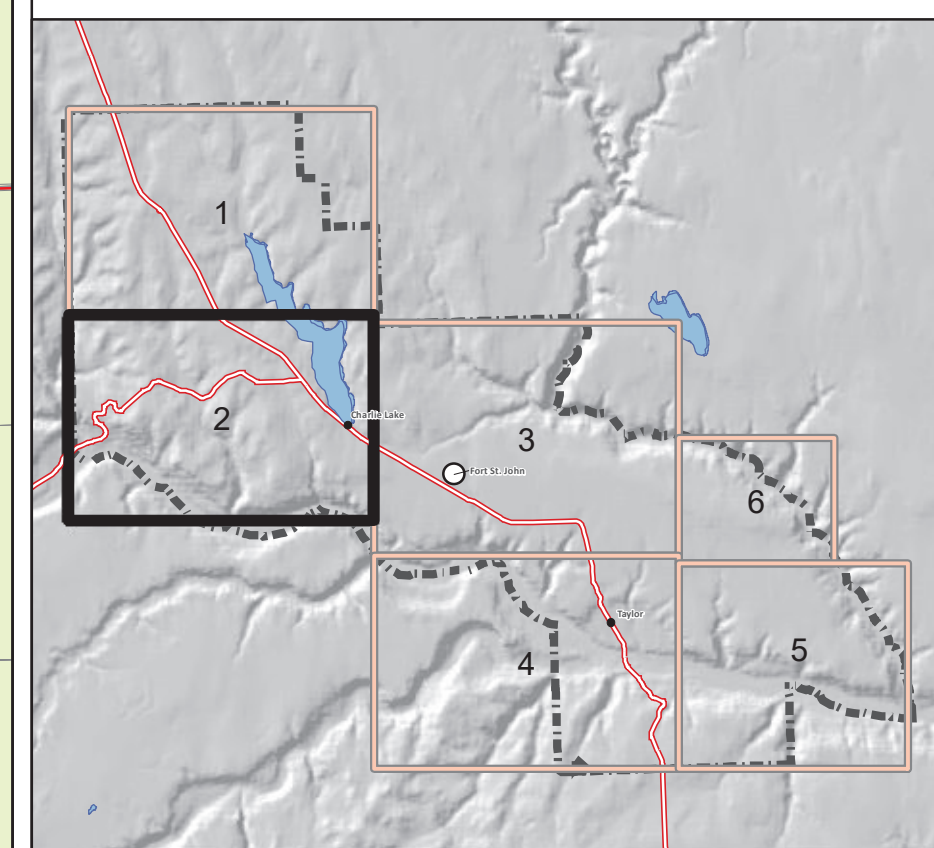
# North Peace Fringe Area Official Community Plan Bylaw No. 2460, 2021 Schedule B Map 2 Land Use Designations



## Legend

- OCP Boundary
  - Municipal Boundary
  - Parcels
  - Rail Line
  - Highway
  - Roads
  - Water Feature
  - River
  - Swamp / Marsh
  - Rural Community
  - Gravel Deposit
- Land Use Designation**
- Agriculture (Ag)
  - Park, open space, natural environment (OS)
  - Civic, Assembly, Institution (Civic)
  - General Commercial (GC)
  - Settlement Centre (SC)
  - Light Service Industrial (LSI)
  - Heavy Industrial (HI)
  - Rural Residential (RR)
  - Community Residential (CR)
  - Industrial Study Area (ISA)
  - Geotechnical Hazard Study Area (GHSA)

For the most up to date information please visit the Peace River Regional Districts web map at: <https://prrd.bc.ca/services/mapping-gis/web-map/>



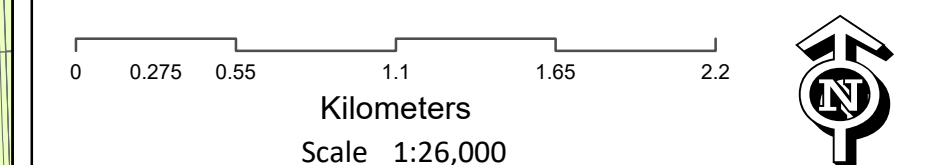
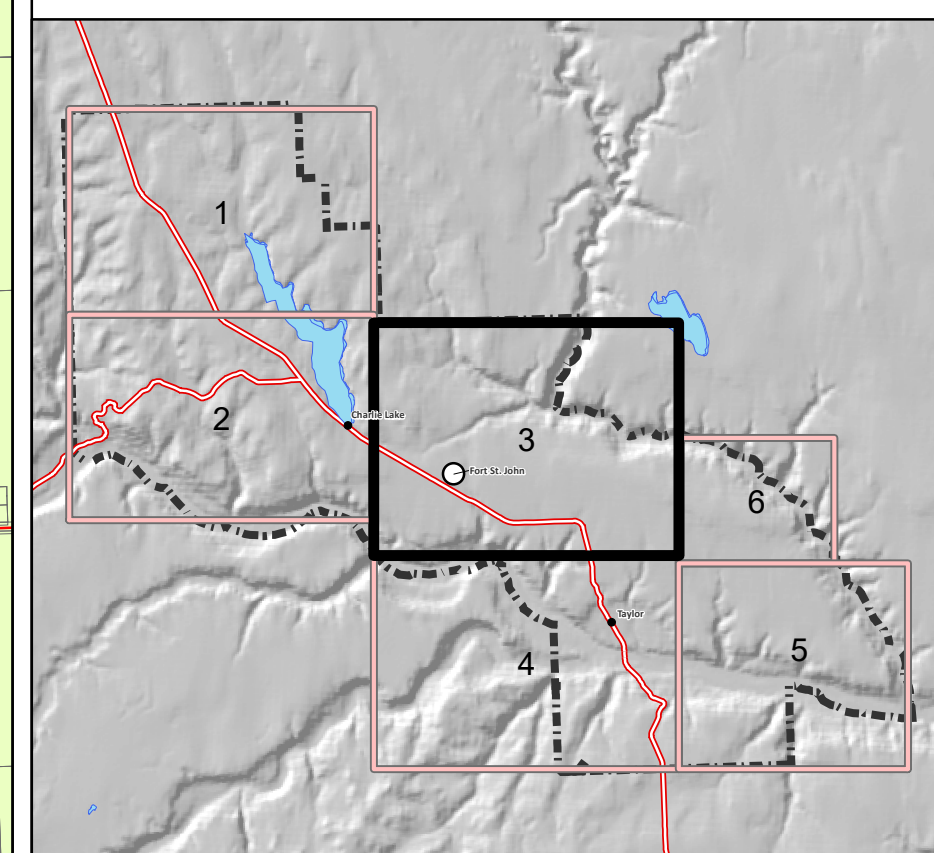
# North Peace Fringe Area Official Community Plan Bylaw No. 2460, 2021 Schedule B Map 3 Land Use Designations



## Legend

- OCP Boundary
  - Municipal Boundary
  - Parcels
  - Rail Line
  - Highway
  - Roads
  - Water Feature
  - River
  - Swamp / Marsh
  - Rural Community
  - Gravel Deposit
- Land Use Designation**
- Agriculture (Ag)
  - Park, open space, natural environment (OS)
  - Civic, Assembly, Institution (Civic)
  - General Commercial (GC)
  - Settlement Centre (SC)
  - Light Service Industrial (LSI)
  - Heavy Industrial (HI)
  - Rural Residential (RR)
  - Community Residential (CR)
  - Industrial Study Area (ISA)
  - Geotechnical Hazard Study Area (GHSA)

For the most up to date information please visit the Peace River Regional Districts web map at: <https://prrd.bc.ca/services/mapping-gis/web-map/>



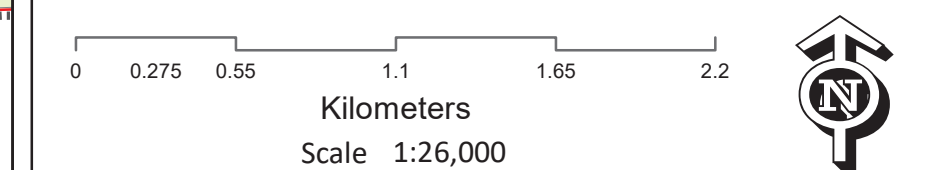
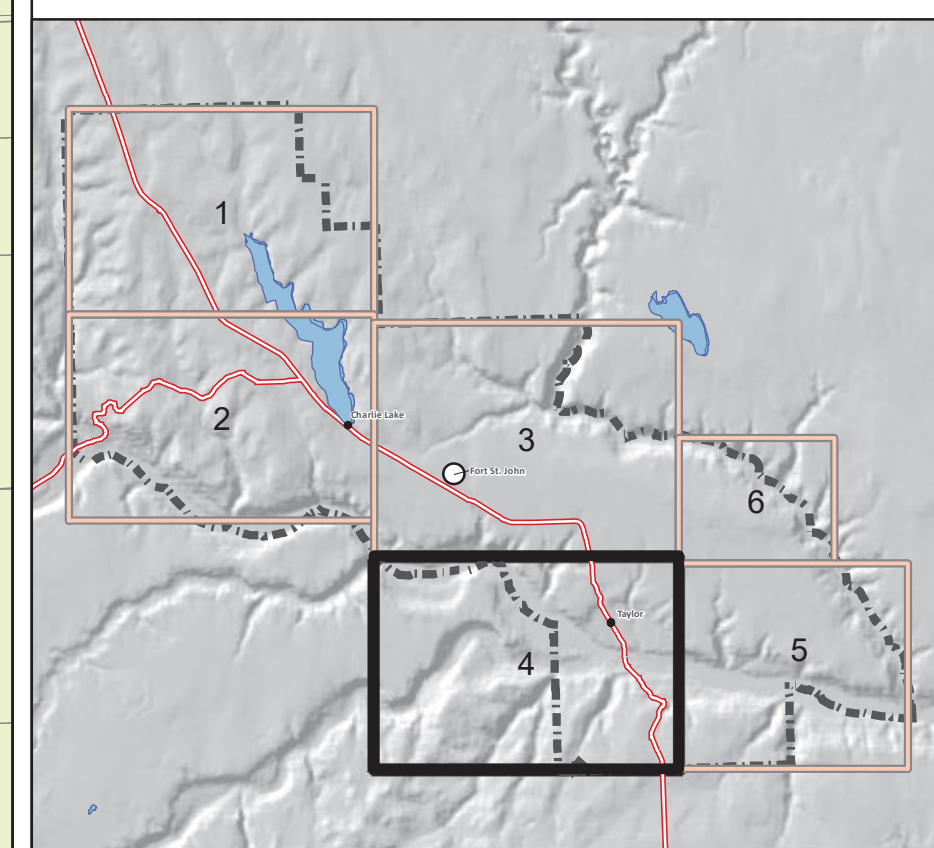
# North Peace Fringe Area Official Community Plan Bylaw No. 2460, 2021 Schedule B Map 4 Land Use Designations



### Legend

- OCP Boundary
- Municipal Boundary
- Parcels
- Rail Line
- Highway
- Roads
- Water Feature
- River
- Swamp / Marsh
- Rural Community
- Gravel Deposit
- Land Use Designation**
- Agriculture (Ag)
- Park, open space, natural environment (OS)
- Civic, Assembly, Institution (Civic)
- General Commercial (GC)
- Settlement Centre (SC)
- Light Service Industrial (LSI)
- Heavy Industrial (HI)
- Rural Residential (RR)
- Community Residential (CR)
- Industrial Study Area (ISA)
- Geotechnical Hazard Study Area (GHSA)

For the most up to date information please visit the Peace River Regional Districts web map at: <https://prrd.bc.ca/services/mapping-gis/web-map/>



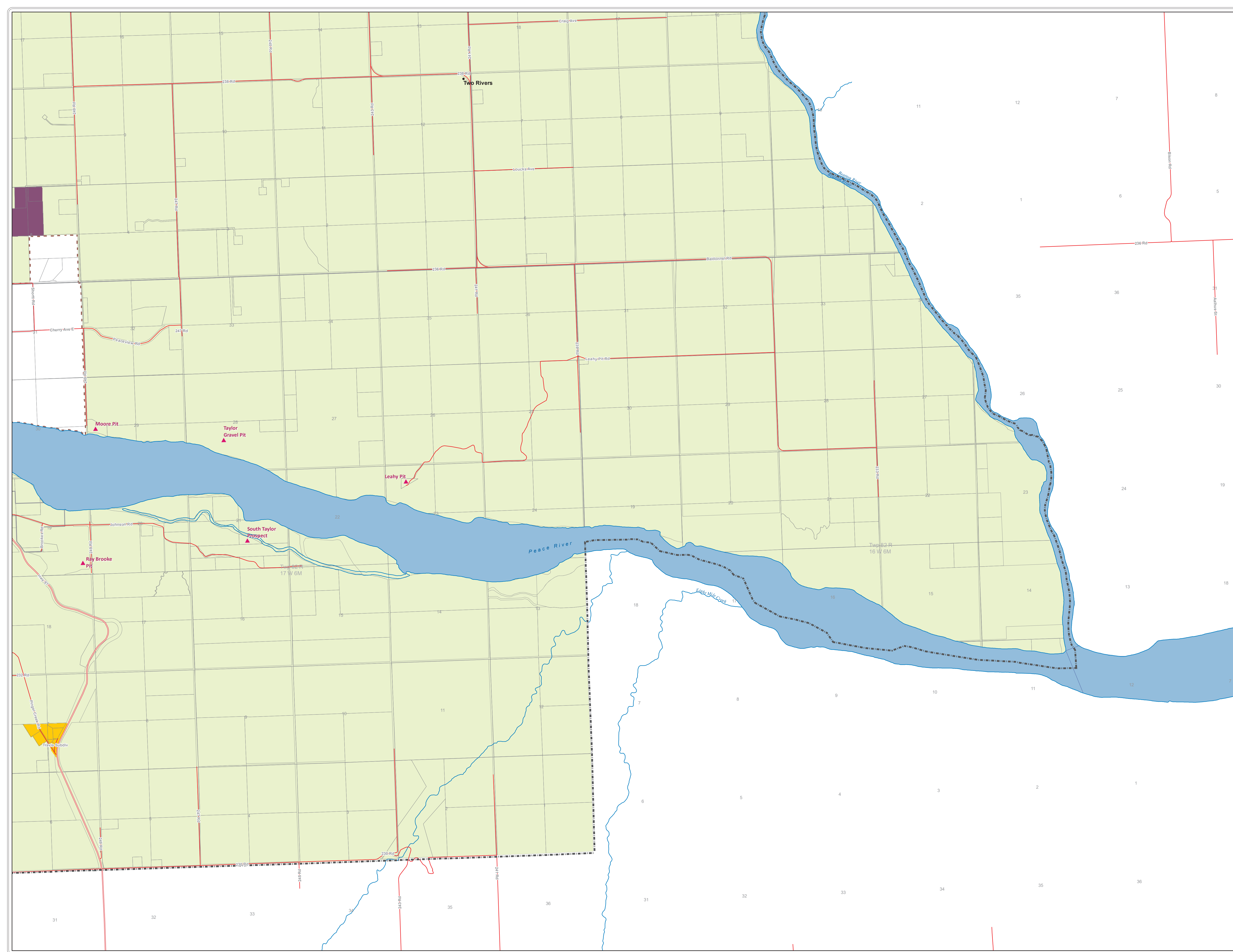
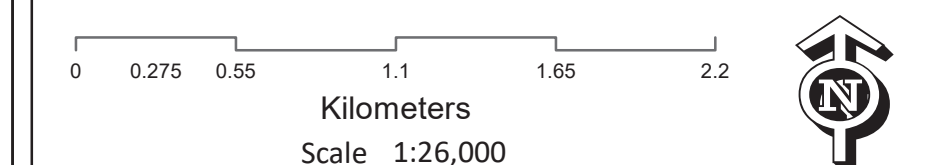
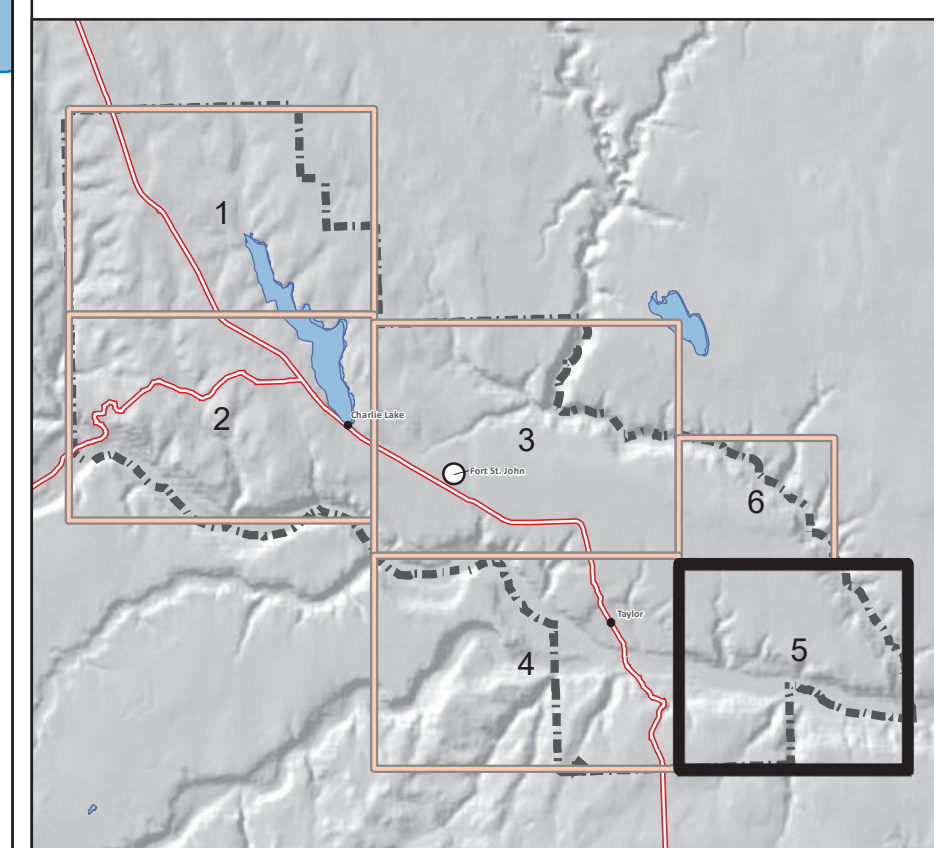
# North Peace Fringe Area Official Community Plan Bylaw No. 2460, 2021 Schedule B Map 5 Land Use Designations



## Legend

- OCP Boundary
  - Municipal Boundary
  - Parcels
  - Rail Line
  - Highway
  - Roads
  - Water Feature
  - River
  - Swamp / Marsh
  - Rural Community
  - Gravel Deposit
- ### Land Use Designation
- Agriculture (Ag)
  - Park, open space, natural environment (OS)
  - Civic, Assembly, Institution (Civic)
  - General Commercial (GC)
  - Settlement Centre (SC)
  - Light Service Industrial (LSI)
  - Heavy Industrial (HI)
  - Rural Residential (RR)
  - Community Residential (CR)
  - Industrial Study Area (ISA)
  - Geotechnical Hazard Study Area (GHSA)

For the most up to date information please visit the Peace River Regional Districts web map at: <https://prrd.bc.ca/services/mapping-gis/web-map/>



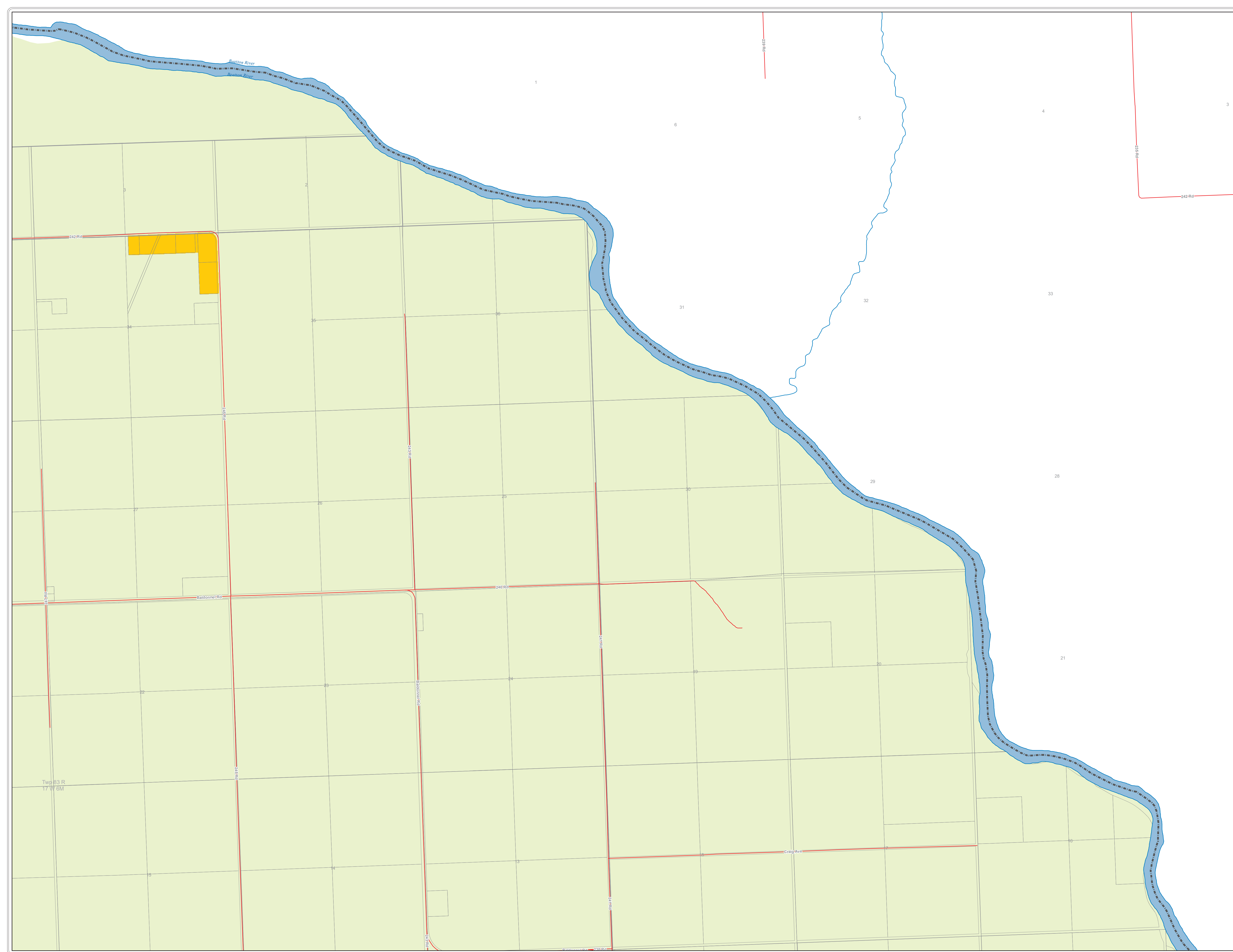
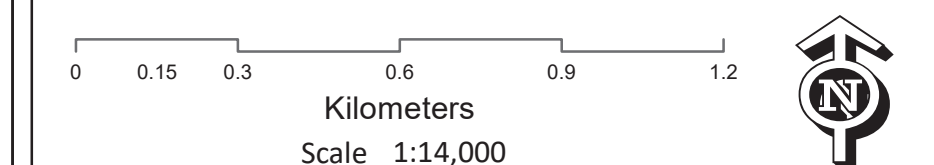
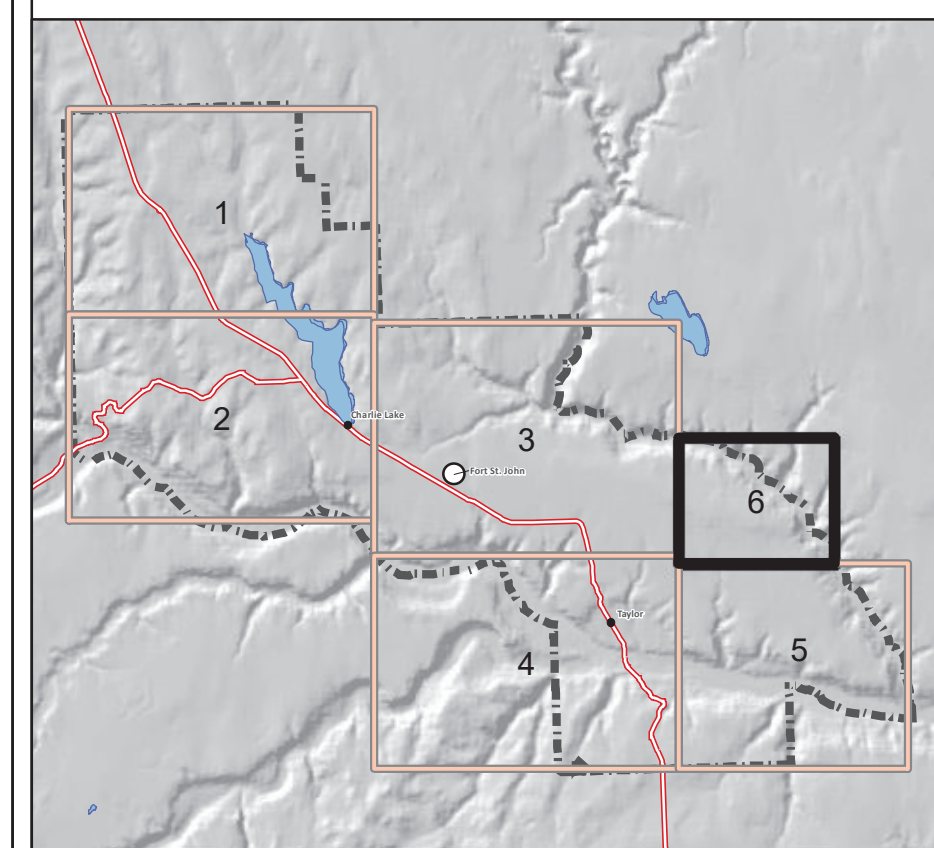
**North Peace Fringe Area  
Official Community Plan  
Bylaw No. 2460, 2021  
Schedule B  
Map 6  
Land Use Designations**



**Legend**

- OCP Boundary
- Municipal Boundary
- Parcels
- Rail Line
- Highway
- Roads
- Water Feature
- River
- Swamp / Marsh
- Rural Community
- Gravel Deposit
- Land Use Designation**
- Agriculture (Ag)
- Park, open space, natural environment (OS)
- Civic, Assembly, Institution (Civic)
- General Commercial (GC)
- Settlement Centre (SC)
- Light Service Industrial (LSI)
- Heavy Industrial (HI)
- Rural Residential (RR)
- Community Residential (CR)
- Industrial Study Area (ISA)
- Geotechnical Hazard Study Area (GHSA)

For the most up to date information please visit the Peace River Regional Districts web map at: <https://prrd.bc.ca/services/mapping-gis/web-map/>



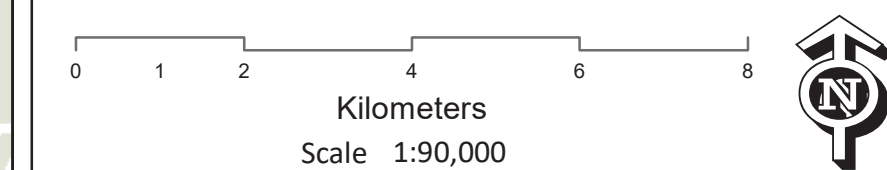
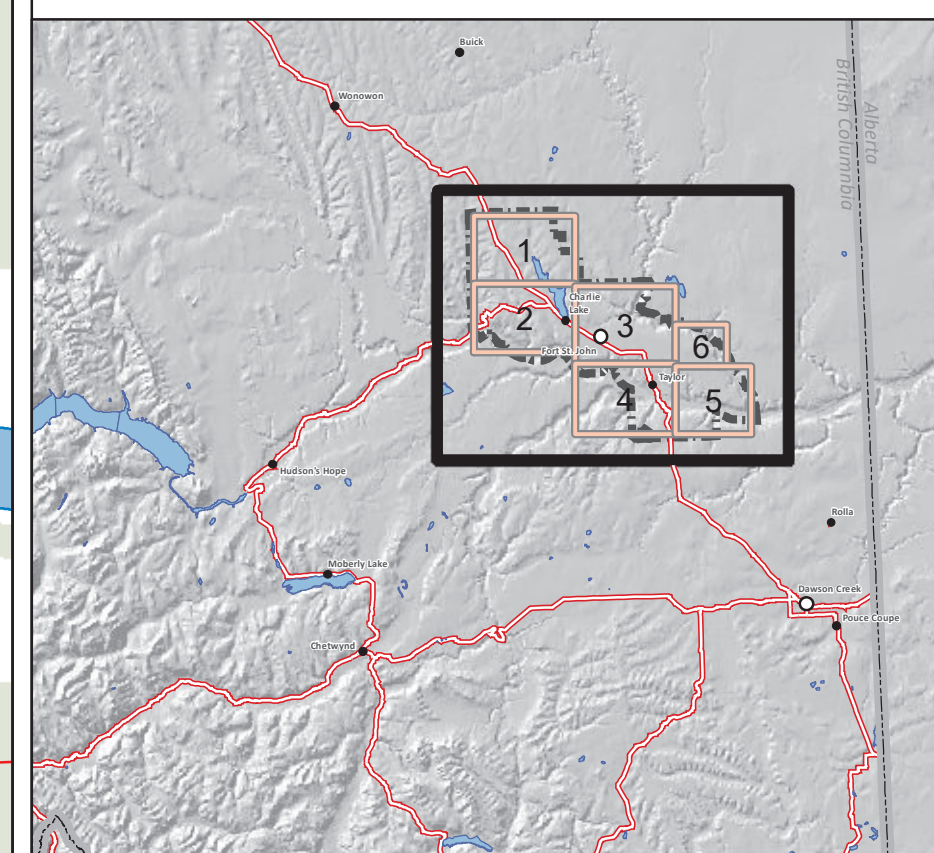


# North Peace Fringe Area Official Community Plan Bylaw No. 2460, 2021 Schedule C Agriculture Land Reserve





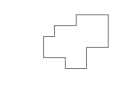










- Legend**
- OCP Boundary
  - Municipal Boundary
  - Parcels
  - Rail Line
  - Highway
  - Roads
  - Water Feature
  - River
  - Swamp / Marsh
  - Rural Community
  - Agricultural Land Reserve

For the most up to date information please visit the Peace River Regional Districts web map at: <https://prrd.bc.ca/services/mapping-gis/web-map/>

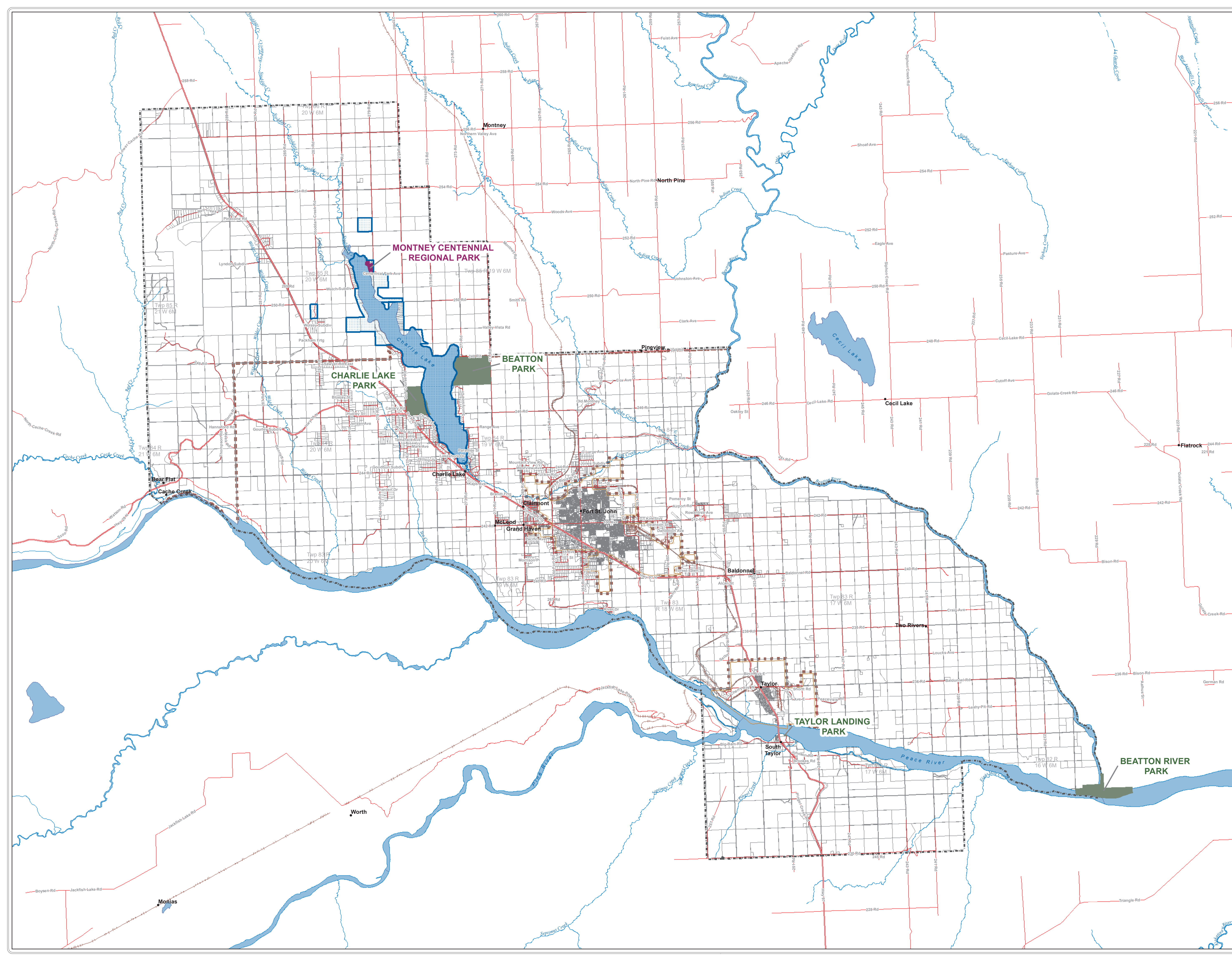
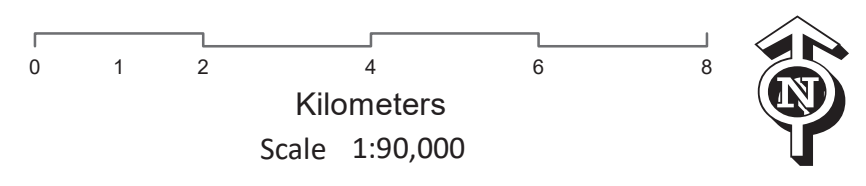
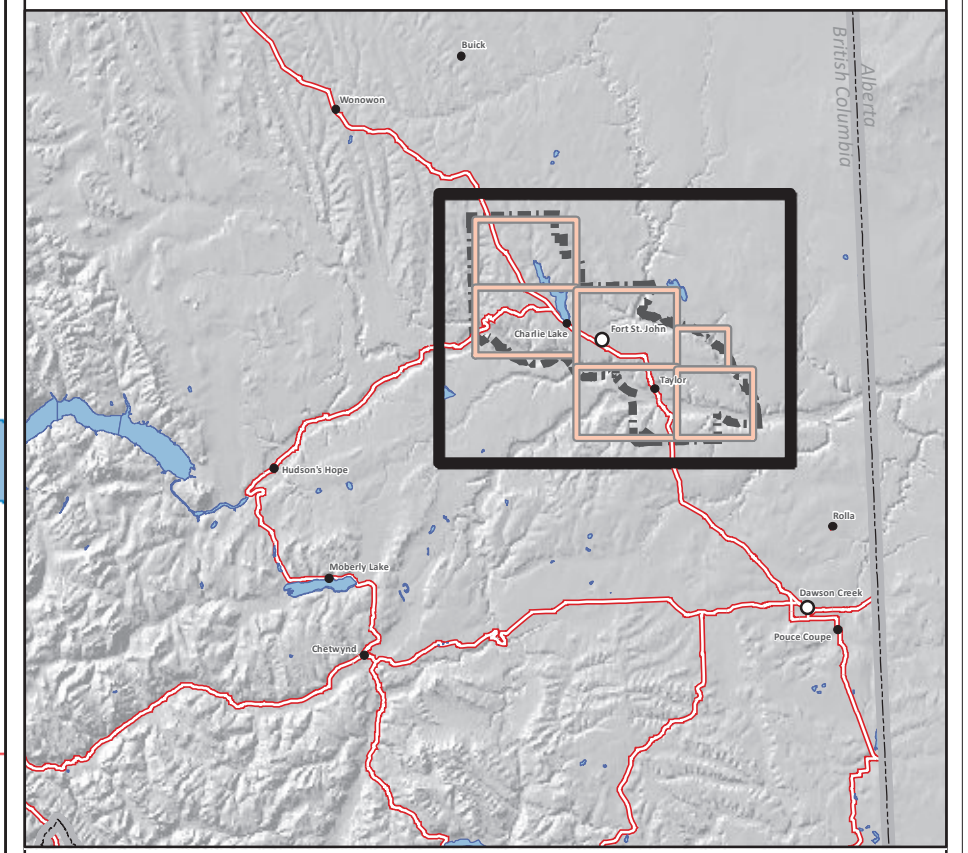


# North Peace Fringe Area Official Community Plan Bylaw No. 2460, 2021 Schedule D Parks, Protected Areas & Watershed



- ### Legend
-  OCP Boundary
  -  Municipal Boundary
  -  Parcels
  -  Rail Line
  -  Highway
  -  Roads
  -  Water Feature
  -  River
  -  Swamp / Marsh
  -  Rural Community
  -  Regional Park
  -  Provincial Park, Protected Area
  -  Charlie Lake Watershed Reserve

For the most up to date information please visit the Peace River Regional Districts web map at: <https://prrd.bc.ca/services/mapping-gis/web-map/>

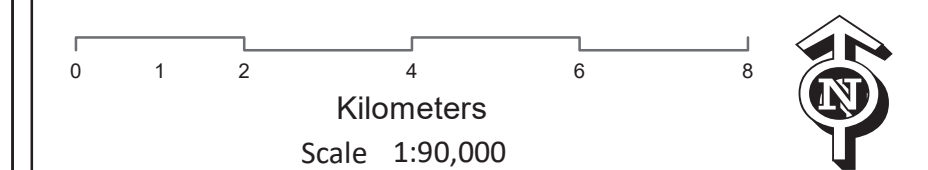
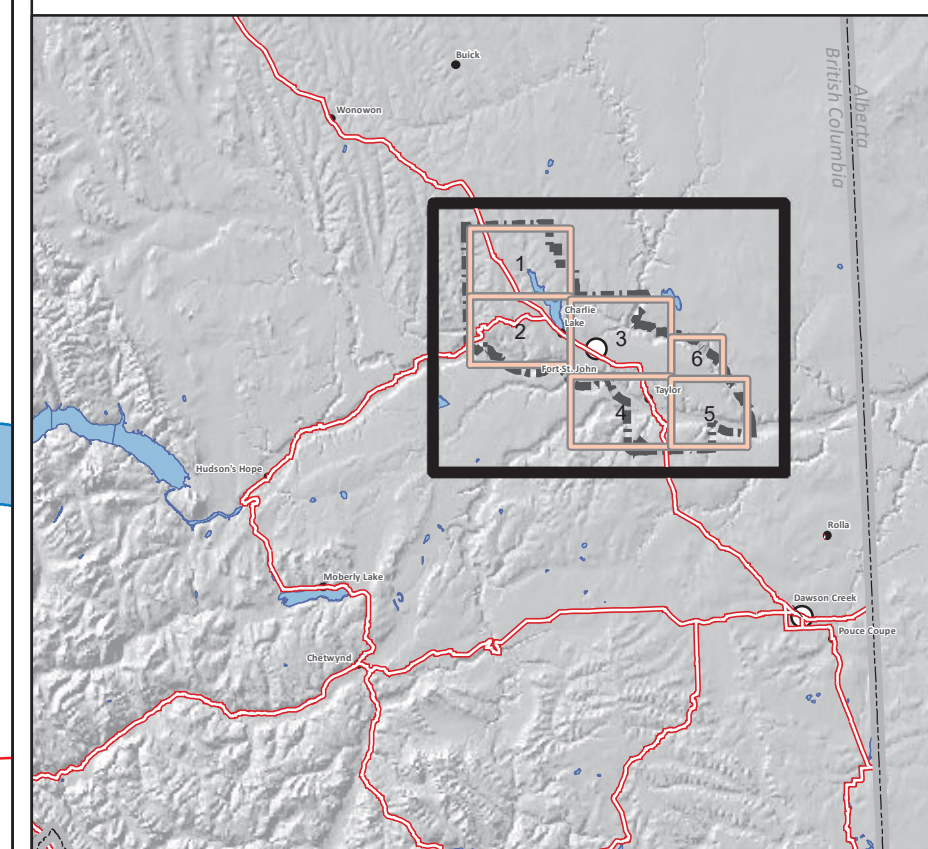


# North Peace Fringe Area Official Community Plan Bylaw No. 2460, 2021 Schedule E Preservation Area & South Taylor Management Area



- Legend**
- OCP Boundary
  - Municipal Boundary
  - Parcels
  - Rail Line
  - Highway
  - Roads
  - Water Feature
  - River
  - Swamp / Marsh
  - Rural Community
  - Preservation Area
  - South Taylor Management Area (STMA)

For the most up to date information please visit the Peace River Regional Districts web map at: <https://prrd.bc.ca/services/mapping-gis/web-map/>

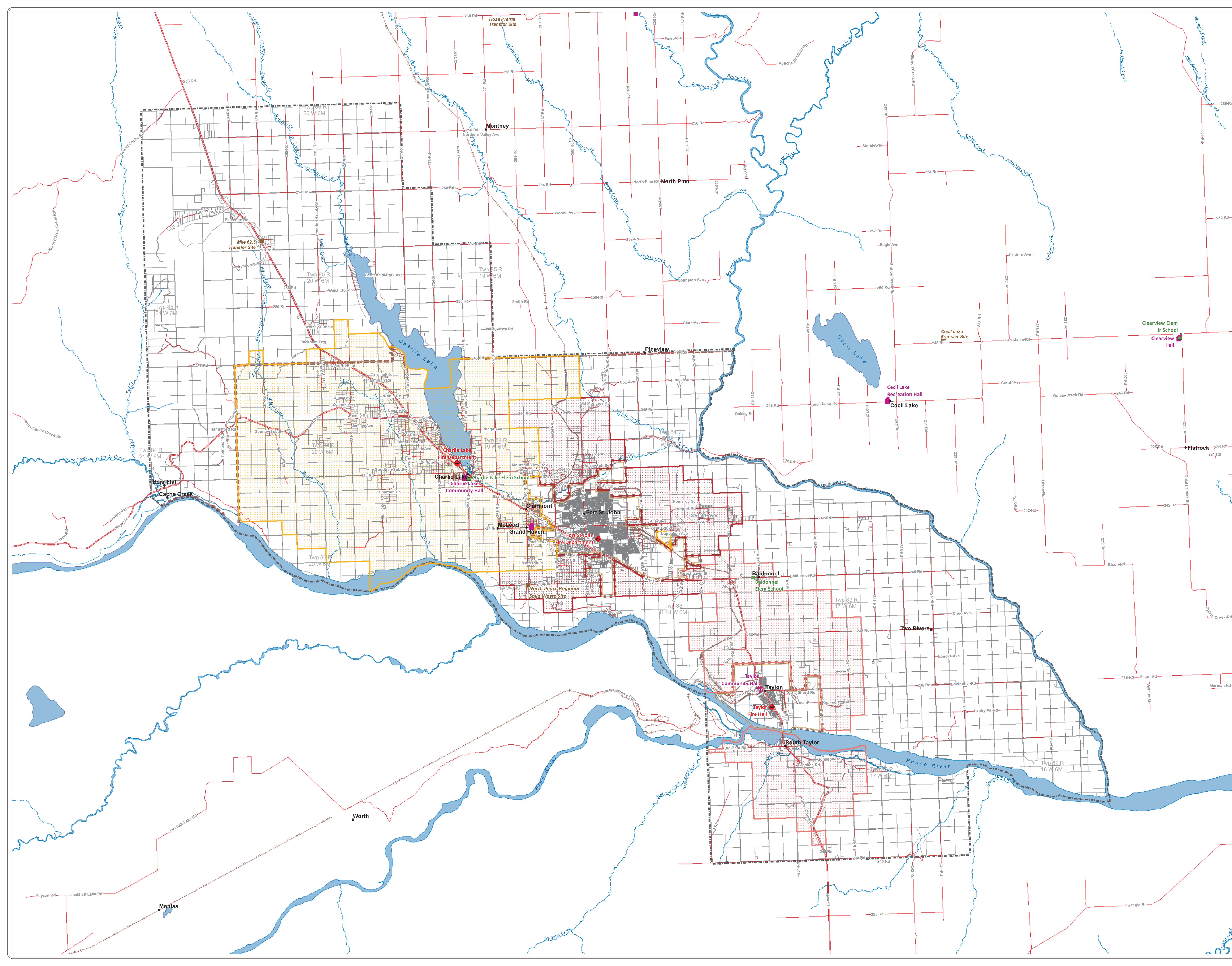
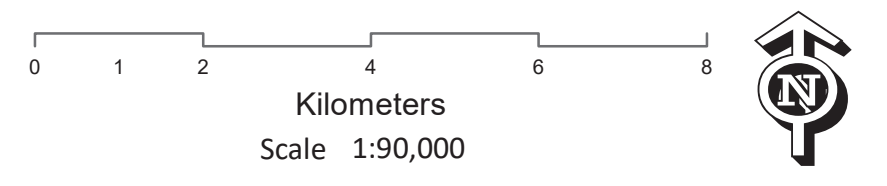
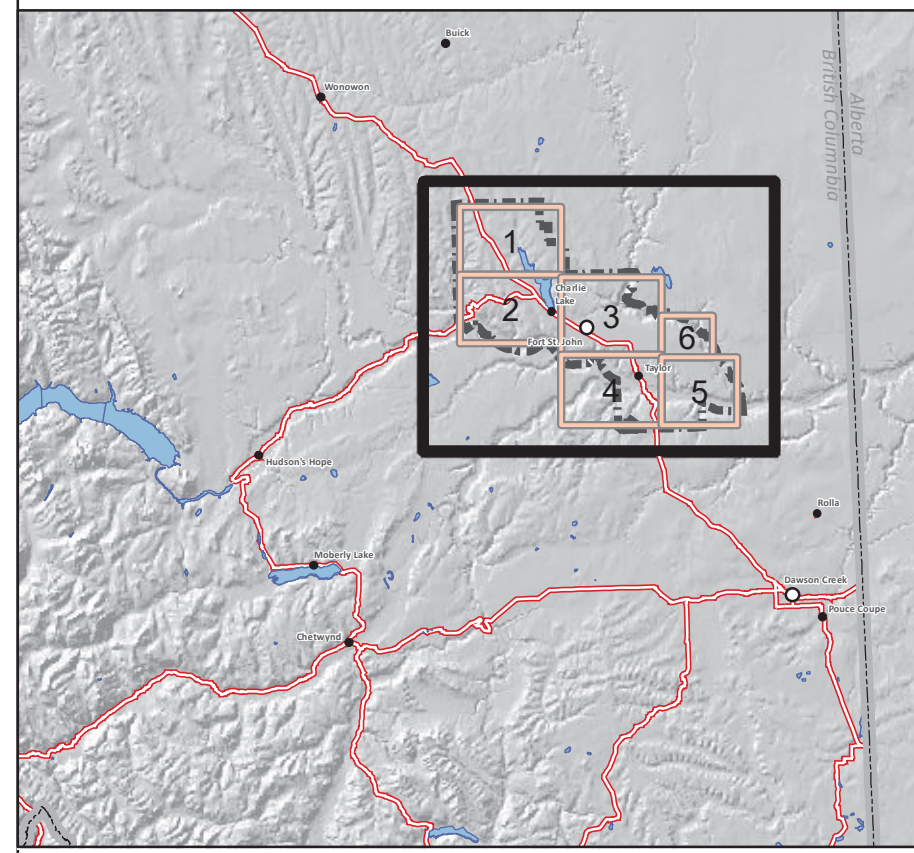


# North Peace Fringe Area Official Community Plan Bylaw No. 2460, 2021 Schedule F Public Facilities



- Legend**
- OCP Boundary
  - Municipal Boundary
  - Parcels
  - Rail Line
  - Highway
  - Roads
  - Water Feature
  - River
  - Swamp / Marsh
  - Rural Community
  - Fire Department
  - School
  - Community Hall
  - Solid Waste / Transfer Site
  - Charlie Lake Fire Protection
  - Fort St John Rural Fire Protection
  - Taylor Rural Fire Protection

For the most up to date information please visit the Peace River Regional Districts web map at: <https://prrd.bc.ca/services/mapping-gis/web-map/>

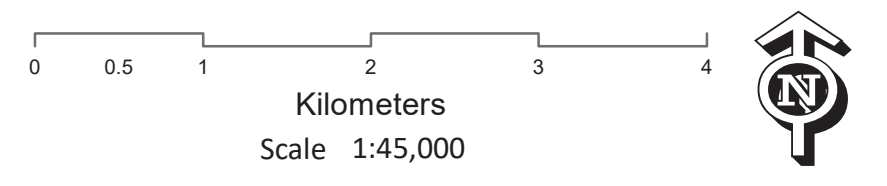
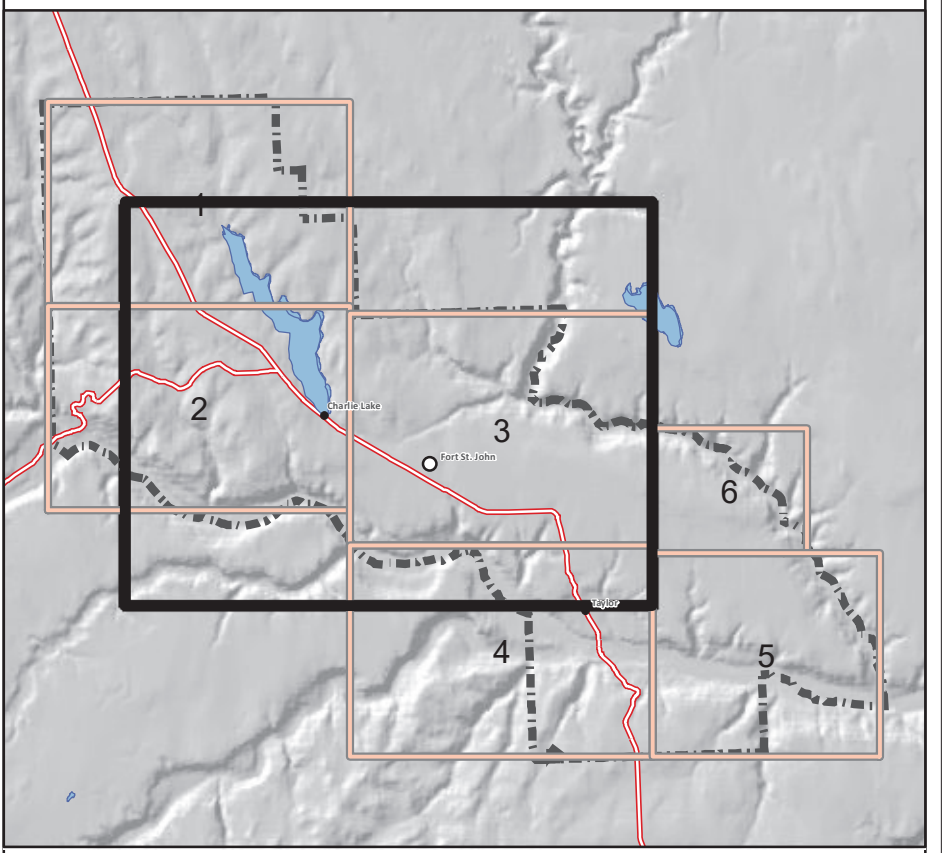


# North Peace Fringe Area Official Community Plan Bylaw No. 2460, 2021 Schedule G Development Permit Areas



- Legend**
- OCP Boundary
  - Municipal Boundary
  - Parcels
  - Rail Line
  - Highway
  - Roads
  - Water Feature
  - River
  - Swamp / Marsh
  - Rural Community
- Development Permits Areas**
- Charlie Lake Development Permit Area
  - Commercial Development Permit Area
  - Industrial Development Permit Area
  - Old Fort Development Permit Area

For the most up to date information please visit the Peace River Regional Districts web map at: <https://prrd.bc.ca/services/mapping-gis/web-map/>



# North Peace Fringe Area Official Community Plan Bylaw No. 2460, 2021 Schedule I Road Classifications & Conceptual Road Network



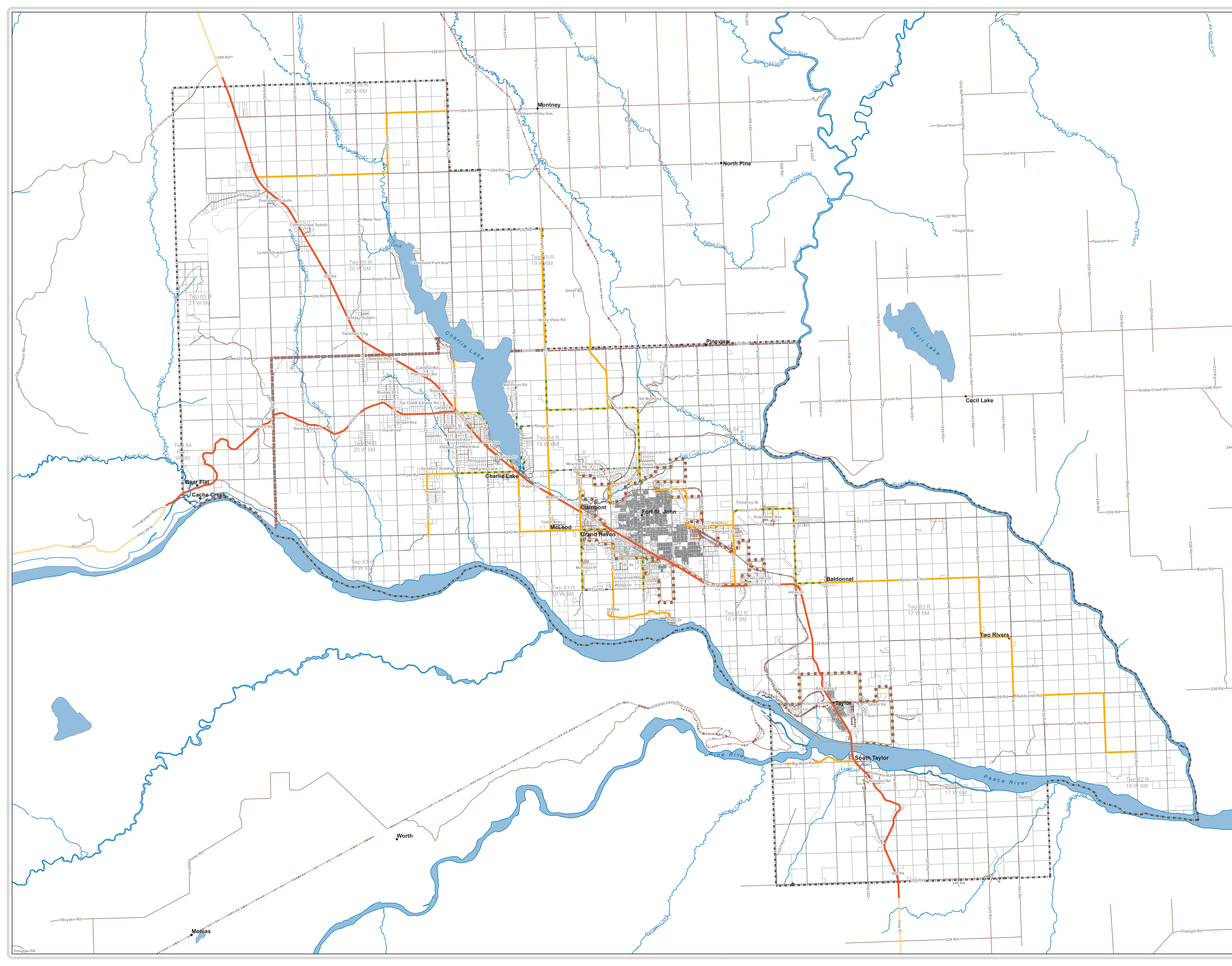
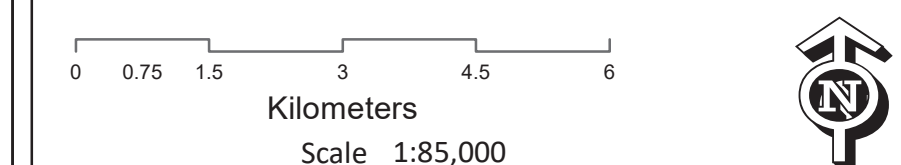
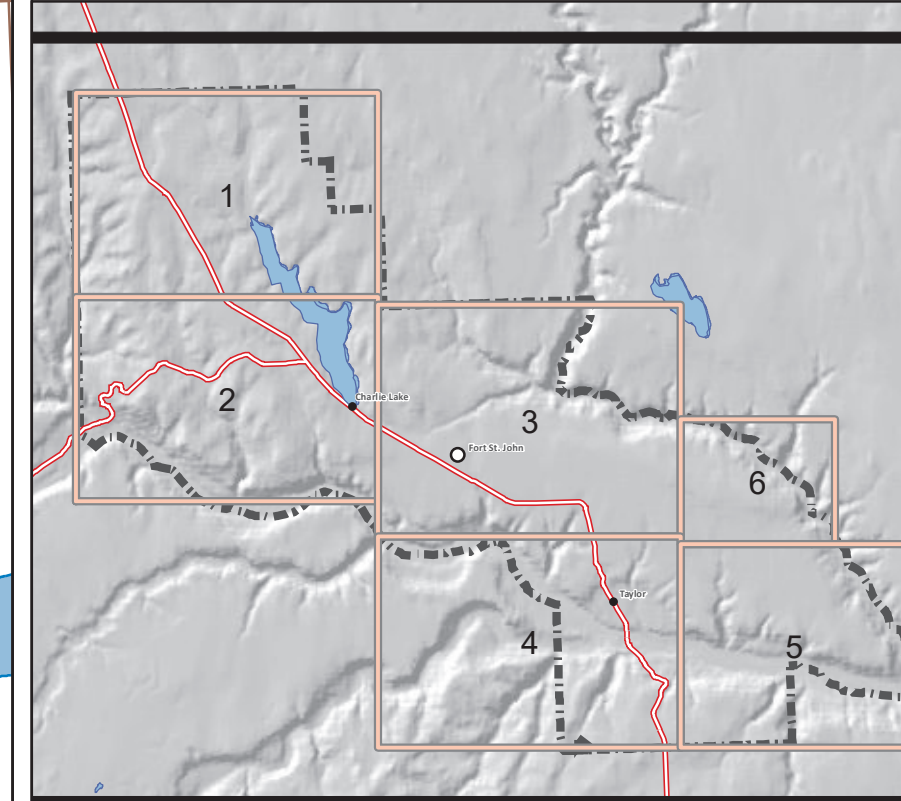
## Legend

- OCP Boundary
- Municipal Boundary
- Parcels
- Rail Line
- Highway
- Roads
- Water Feature
- River
- Swamp / Marsh
- Rural Community

## Proposed Road Network

- Highway
- Major Road
- Major Road Greenway
- Minor Road Greenway

For the most up to date information please visit the Peace River Regional Districts web map at: <https://prrd.bc.ca/services/mapping-gis/web-map/>



# North Peace Fringe Area Official Community Plan Bylaw No. 2460, 2021 Schedule H Conceptual Public Transit Network



## Legend

- Municipal Boundary
- OCP Boundary
- Parcels
- Rail Line
- Highway
- Roads
- Water Feature
- River
- Swamp / Marsh
- Rural Community

## Proposed Routes

- Charlie Lake
- Taylor
- Bus Stop
- Exchange/Terminus

For the most up to date information please visit the Peace River Regional Districts web map at: <https://prrd.bc.ca/services/mapping-gis/web-map/>

