

**Peace River Regional District
By-Law No. 1328, 2000**

A by-law to establish a service within a defined portion of
Electoral Area 'D' for the provision of Sewage Collection

WHEREAS the Regional Board of the Peace River Regional District may, by by-law, pursuant to Section 796 of the Local Government Act, establish and operate any service the Board considers necessary or desirable for all or part of the Regional District;

AND WHEREAS the Board wishes to establish a service for the purpose of providing a sewage collection service for the benefit of the residents of the service area;

AND WHEREAS the Board has received a petition pursuant to Section 797.4 of the Local Government Act requesting the installation and operation of a sewage collection system in a defined portion of Electoral Area 'D', and such petition has been determined to be sufficient pursuant to Section 632 of the Local Government Act;

AND WHEREAS the Regional Board has authorized the approval of the electors required under Section 801(1)(b) to be given on behalf of the electors in accordance with Section 801.5 of the Local Government Act;

AND WHEREAS the Director of Electoral Area 'D' has consented, in writing, to the adoption of the by-law in accordance with Section 801.5(2) of the Local Government Act;

AND WHEREAS the approval of the Inspector of Municipalities has been obtained pursuant to Section 801 of the Local Government Act;

AND THEREFORE, the Board of the Peace River Regional District, in open meeting assembled, enacts as follows:

Service Being Established

1. The Service hereby established under this by-law is to provide a sewage collection system for the benefit of the residents of a defined portion of Electoral Area 'D'.

Service Area Boundaries

2. The boundaries of the Service Area are that portion of Electoral Area 'D' as graphically represented on the map attached as Schedule "A" to this by-law, hereinafter referred to as the "Chilton Subdivision".

Participating Areas

3. The participating area is the defined portion of Electoral Area "D" as shown on the map attached as Schedule "A" to this by-law.

Cost Recovery

4. The annual cost of providing the service shall be recovered by a parcel tax imposed in the service area, to be levied and collected in accordance with Section 806 and 806.1 of the Local Government Act, on the basis of a single amount for each parcel.

Requisition

5. The maximum amount that may requisitioned under Section 4 for the service provided is \$35,000.

Citation

6. This by-law may be cited as "Chilton Subdivision Sewage Collection Service Area Establishment By-law No. 1328, 2000".

READ A FIRST TIME this 9th day of November, 2000.

READ A SECOND TIME this 9th day of November, 2000.

READ A THIRD TIME this 9th day of November, 2000.

APPROVED by the Inspector of Municipalities this 6th day of February, 2000.²⁰

ADOPTED this 8th day of February, 2000.²⁰⁰¹

FILED with the Inspector of Municipalities this _____ day of _____, 2000.

CERTIFIED A TRUE AND CORRECT COPY of
"Chilton Subdivision Sewage Collection Service
Area Establishment By-law No. 1328, 2000."

Moray Stewart
Moray Stewart, Administrator

THE CORPORATE SEAL of the Peace River
Regional District was hereto affixed in the
presence of:

Karen Goodings
Karen Goodings, Chair

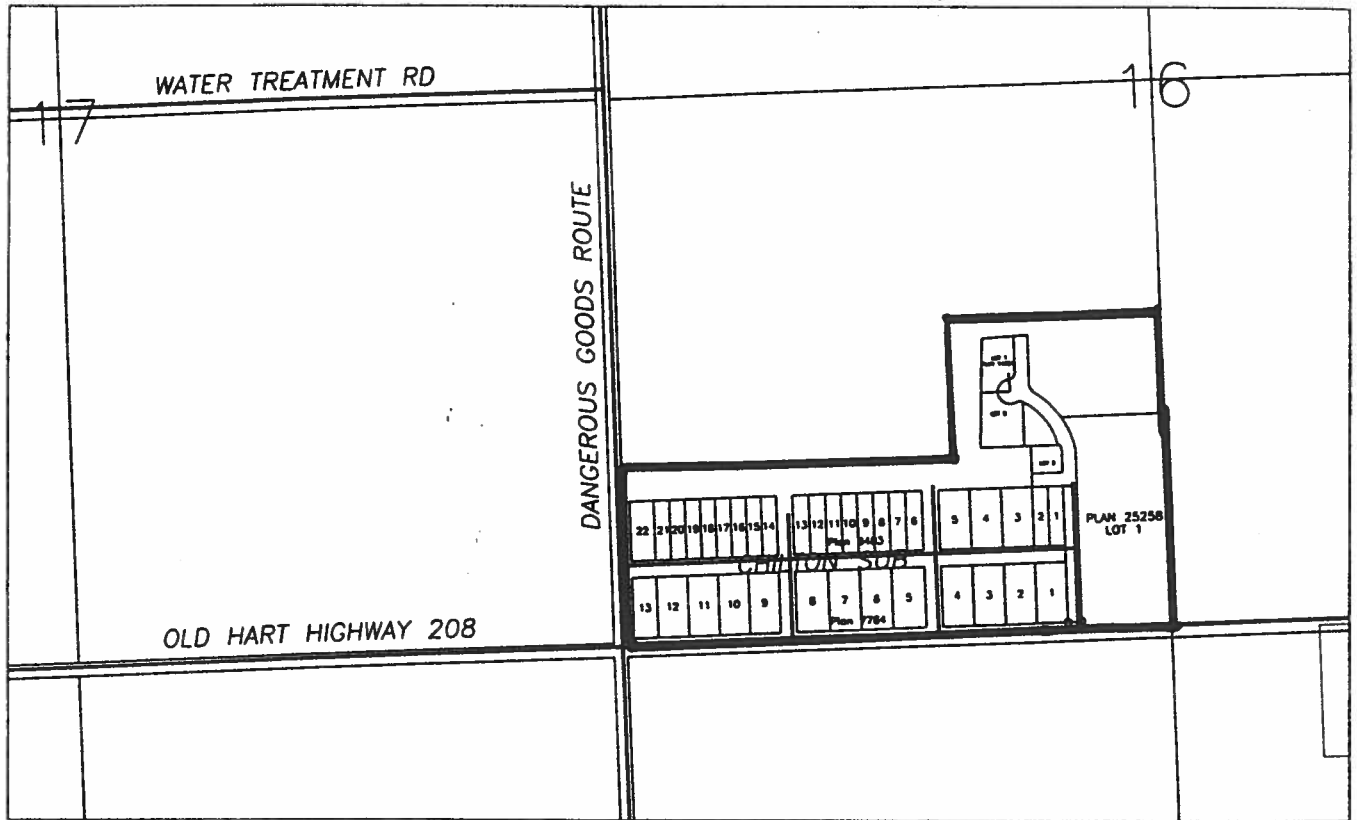
Moray Stewart
Moray Stewart, Administrator

I HEREBY CERTIFY THE FOREGOING to be a true and correct copy of By-law No. 1328, 2000 cited as "Chilton Subdivision Sewage Collection Services Area Establishment By-law No. 1328, 2000" as read a third time by the Regional Board of the Peace River Regional District at a meeting held on the 9th day of November, 2000.

Dated at Dawson Creek, B.C. this 10th day of November, 2000.

Moray Stewart
Moray Stewart, Administrator

Schedule "A"



CERTIFIED A TRUE AND CORRECT COPY of
Schedule "A" to "Chilton Subdivision Sewage
Collection Service Area Establishment By-law
No. 1328, 2000".


Moray Stewart, Administrator